



PN-HY551/HY501/HY431

4K Ultra HD displays for digital signage

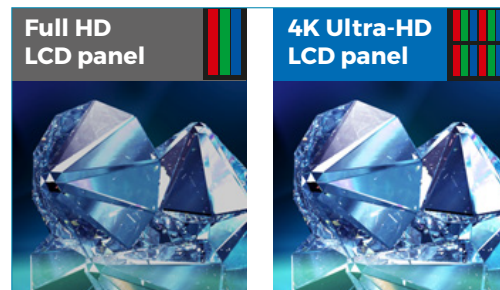
Clearly stand-out – where it matters most.

Deliver attention-grabbing information anytime and anywhere with outstanding clarity and style, and effortless flexibility.

Enjoy the perfect combination of an exceptionally slim and stylish design, vividly clear 4K pictures and powerful stand-alone operation with Sharp's PN-HY digital signage displays. It makes them the ideal choice for signage and information sharing in a wide range of retail and corporate environments, including meeting rooms and reception areas, as well as food & beverage outlets and leisure establishments.

They feature a 4K Ultra HD (3840 x 2160) resolution screen, which is four times the resolution of 1080p Full HD, so everything on-screen, including movies and still images, is rendered in exceptional detail. Their 500 cd/m² brightness and innovative LED backlighting also creates more vivid colours and a boosted contrast, so text is sharper and graphics are beautifully textured. It ensures that content is always displayed with the detail, depth, and definition that it was created with.

The exceptional level of clarity delivered by the screens means that they are perfect for reading and displaying complex information in professional specialised applications, such as CAD/CAM, traffic control, surveillance or medical imaging systems. In addition, their white balance adjustment and colour temperature makes them ideal for high-quality broadcasting and video production.



Simply more life-like

The PN-HY professional displays have a wider colour gamut, so every colour is displayed on-screen with much greater accuracy. Their 10Bit colour depth is approximately 20% larger than the sRGB (Red, Green, Blue spectrum) standard colour gamut range, so images look more natural and true-to-life.

It means that they are ideal for communicating precise and attention-grabbing information to a wide range of audiences. In particular, they excel in any indoor venues, including meeting rooms and executive boardrooms, as well as digital signage in reception areas, retail locations and public spaces, such as hotels and museums.



Look great anywhere

You always want your content to make a really positive impact, but now your display can stand out too – for all the right reasons!

Our PN-HY professional displays have a slim profile and stylish cabinet design that gives them an impressively sleek and elegant look. Their lightweight design also makes them easy to install in a wide variety of locations.

So, as well as delivering eye-catching content that really grabs people's attention, you can exquisitely enhance almost any space, from the most sophisticated boardroom to high traffic retail environments.

The right size for you

The screen sizes range from 43" up to 55", so you can choose the best display to suit your specific needs or operating space.

All you need to make a real impact.

Bring your content to life and attract people's attention by combining stunning visuals with audio to create a truly captivating experience.

In today's multimedia age it takes a lot to attract and retain the attention of audiences who are being constantly bombarded with information. The static images and silent video used in traditional commercial signage and retail displays are simply no longer as effective.

With our range of PN-HY 4K professional displays you can easily combine high-quality video and audio to present your content in a more engaging way. They all include built-in speakers, support for USB playback and a choice of useful connectivity options.

In particular, their 10W + 10W speakers automatically enhance any multimedia content, without having to spend time, effort or money on connecting and configuring external speakers. And because they are fully integrated they also save space and add to the sleek, modern look of your displays.





Instant plug and go

The PN-HY range can play slideshows of 4K Ultra HD photos, 4K Ultra HD videos and music using their built-in USB media player.

There's no need to connect a separate PC or other hardware, install specialist software applications, or deal with any complex cabling. Simply plug in a USB memory device containing your media and you're instantly ready to start!

All together simpler control

Using an integrated LAN/RS-232C interface, all of your PN-HY displays can be easily controlled and monitored from a single PC or laptop in a central location. So you can adapt how they are used to suit your existing control systems.

Each display is also fitted with four HDMI inputs, so you can readily switch between sources.



Always working – exactly how you want.

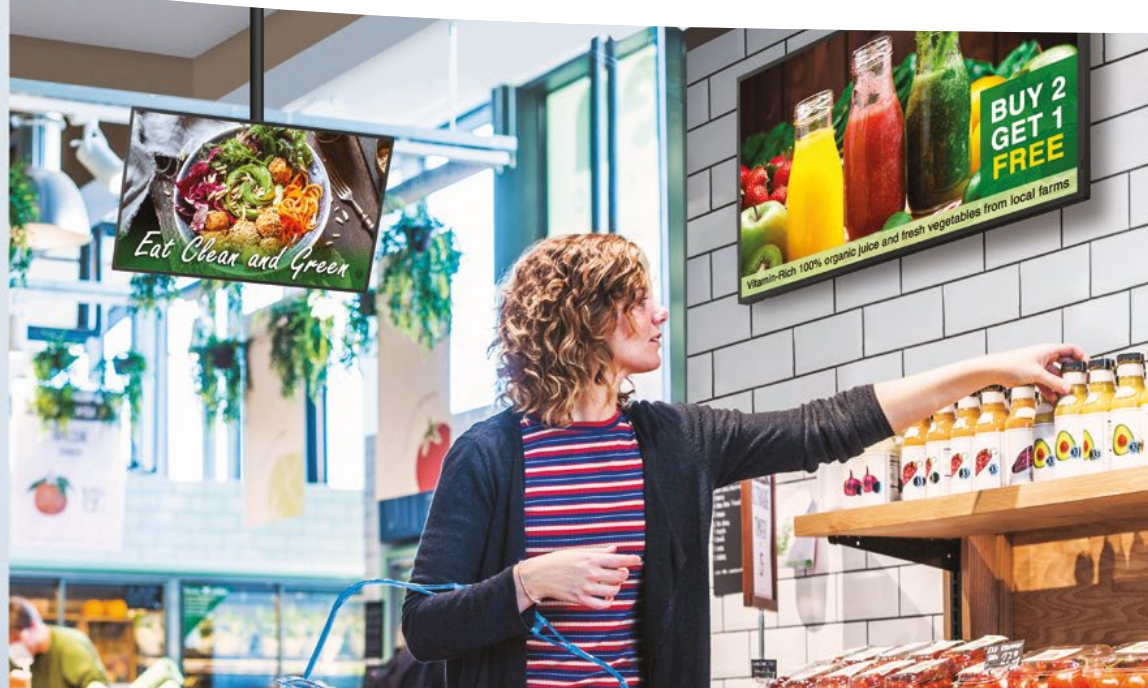
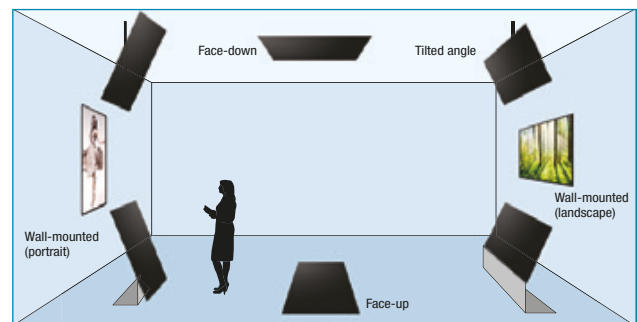
You need to be sure that your information is shown at the right time and in the right way in order to maximise its effectiveness.

Our PN-HY professional displays are designed for non-stop use. Their 24/7 operating capability means you can continuously deliver precise customer or visitor information and impactful promotional messages. So they are ideal for any business or retail locations that are open for long periods, such as reception areas, transport hubs and shopping centres.

All the flexibility you need

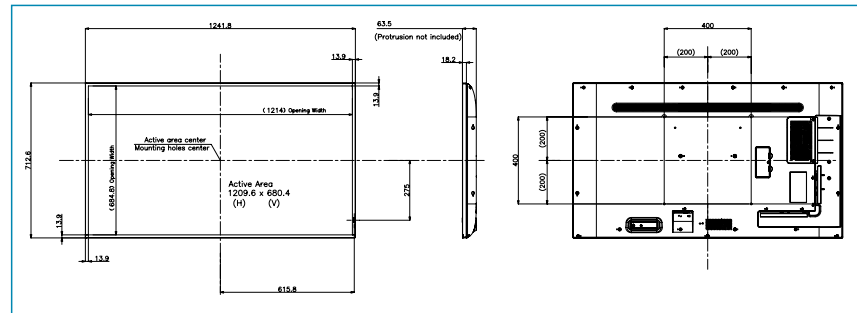
The PN-HY displays can be conventionally wall mounted in either landscape or portrait mode, so they suit their surroundings and the type of content you want to show. It means you can create high-impact visual posters or engage people with ultra-realistic, wide-screen films or images.

In addition, they can also be installed face-down on a ceiling, perhaps for high-profile retail advertising, or face-up on a table or floor, for innovative wayfinding signage and points of interest (POI) in public spaces. So you can make an instant impression and present information in unique and memorable ways.

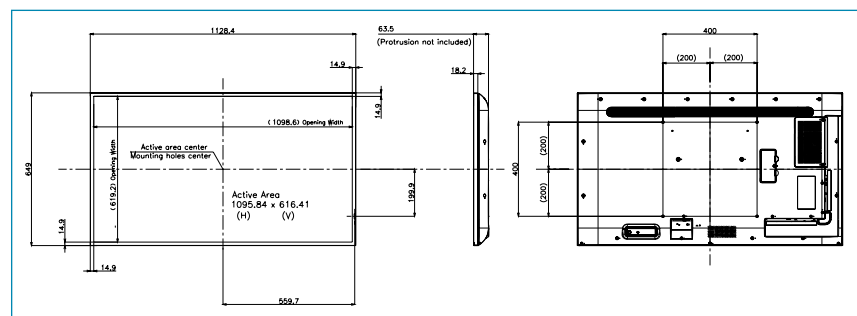


Dimensions

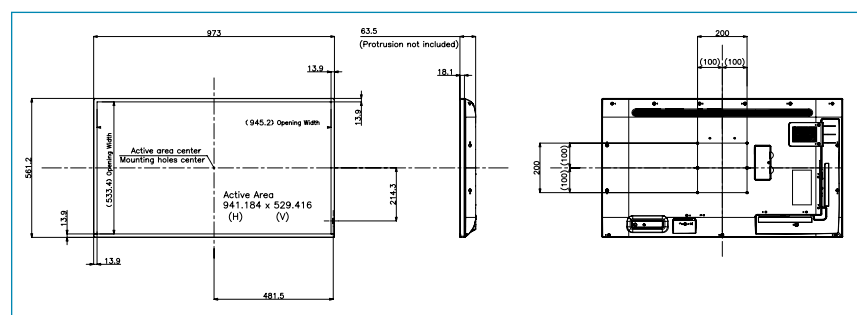
PN-HY551



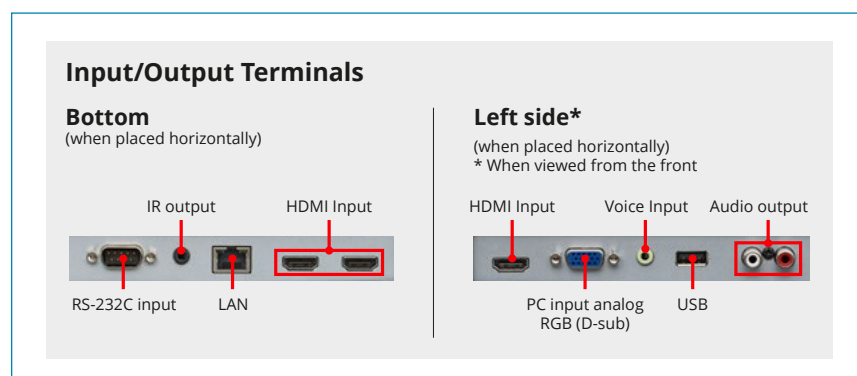
PN-HY501



PN-HY431

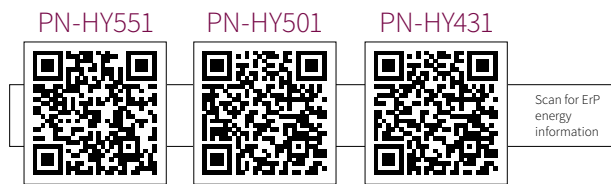


Compatibility



Specifications

Model name		PN-HY551	PN-HY501	PN-HY431
Installation		Landscape / Portrait / Face-up / Face-down / Tilt-forward / Tilt-backward		
LCD Panel	Panel Size	55" class (138 cm) TFT LCD	50" class (125 cm) TFT LCD	43" class (107 cm) TFT LCD
	Backlight	LED, full array		
	Max. Resolution	3,840 × 2,160 pixels		
	Max. Display Colours (approx.)	1,070 million colours		
	Pixel Pitch (HxV)	0.315 × 0.315 mm	0.2854 × 0.2854 mm	0.2451 × 0.2451 mm
	Max Brightness*1	500 cd/m ²		
	Contrast ratio	5,000 : 1	4,000 : 1	1,200 : 1
	Viewing Angle (H/V)	178°/178° (CR 10)		
	Operation Time	24/7		
	Active Screen Area (W×H)	1209 x 680 mm	1095 x 616 mm	941 x 529 mm
Response Time	8ms (grey to grey, avg.)			
Input Terminals*2	Computer	1x Mini Sub-D 15pin, 3x HDMI2.0 with HDCP2.2 and CEC		
	Plug & Play	VESA DDC2B		
	Audio	3.5mm mini stereo jack x 1		
	Serial (RS-232C)	D-sub 9 pin x 1		
Output Terminals*2	Audio	RCA pin (L/R) x 1		
USB Port		USB port (2.0-compliant) × 1		
LAN Terminal		10Base-T/100Base-TX		
Speakers Output		10W + 10W		
Power Requirement		AC 100 - 240 V, 50/60 Hz		
Mounting		400 x 400 mm M6	400 x 400 mm M6	200 x 200 mm M6
Environmental Conditions	Operating Temperature*3	0°C to 40°C		
	Operating Humidity	20% to 80% (no condensation)		
Power Consumption (Input signal waiting state/standby mode*4)		150 W (1W / 0.5W)	110 W (1W / 0.5W)	100 W (1W / 0.5W)
Dimensions (WxHxD in mm)		1241.8 x 712.6 x 63.5	1128.4 x 649 x 63.5	973 x 561.2 x 63.5
Weight		18 kg	15 kg	11.5 kg
Main Accessories		Remote Control Transmitter 1, Operation Manual, Installation Set-Up Manual, CD Rom, Power Cord, Battery 2 PC (type AA for remote controller transmitter), Cable Clamp, Portrait Mount Sticker Kit		



*1 Brightness depends on input mode and other picture settings. Brightness level will decrease over time. Due to the nature of the equipment, it is not possible to precisely maintain a constant level of brightness. *2 Use a commercially available connection cable for PC and other video connections. *3 When using the monitor lying flat on a surface (or when the monitor is tilted more than 20 degrees upward or downward from the perpendicular in relation to a level surface) the ambient temperature must be within the range of 0°C to 30°C. Temperature conditions may change when using the monitor together with optional equipment. In such cases, check the temperature conditions specified by the optional equipment. *4 No optional part is attached.

Design and specifications are subject to change without prior notice. All information was correct at time of print. The terms HDMI, HDMI High-Definition Multimedia Interface, and the HDMI Logo are trademarks or registered trademarks of HDMI Licensing Administrator, Inc. All other brand names and product names may be trademarks or registered trademarks of their respective owners. © Sharp Corporation November 2021. Ref: 21437 PN-HY551/HY501/HY431 8pp Brochure. All trademarks acknowledged. E&OE.