

BT7512

SINGLE ARM FLAT SCREEN WALL MOUNT WITH TILT & SWIVEL



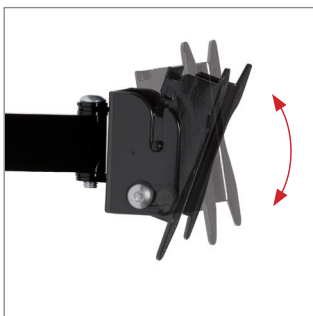
Designed to mount small flat screens, the BT7512 features a single swivel arm with easy tilt adjustment and a full 360° screen rotation for easy portrait or landscape mounting. The wall plate features 'OWLS' on wall levelling system to ensure a straight and smart installation. The BT7512 is also compatible with B-Tech's range of poles and collars, increasing the number of different ways it can be mounted, ideal for commercial applications as well as home installations. Security screws are provided to help prevent unauthorized removal of the screen.

SPECIFICATION

Recommended screen size	up to 28"
Max load	15kg
VESA® compatibility	75 x 75 & 100 x 100
Tilt adjustment	+17 / -10°
Swivel at wall	180°
Rotation	360°
Distance from wall	75mm to 280mm
Colour	Black

FEATURES

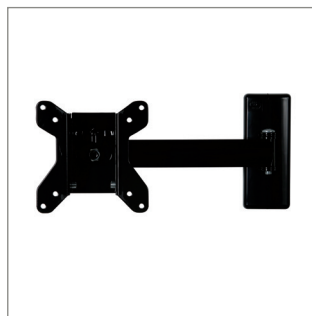
- Easy tilt and swivel adjustment
- Screen rotation allows screen to be mounted in landscape or portrait orientation
- Features 'OWLS' On Wall Levelling System
- CLIPLOGIC™ cable management included
- Compatible with B-Tech System 2 professional range
- Mounts to B-Tech BT7850 poles using x2 BT7841 / BT7052 Collars
- Security locking screws and Allen key provided help prevent unauthorised removal of the screen
- Simple 'hook-on' installation
- Coverplates included for a neat and tidy installation
- All mounting hardware included



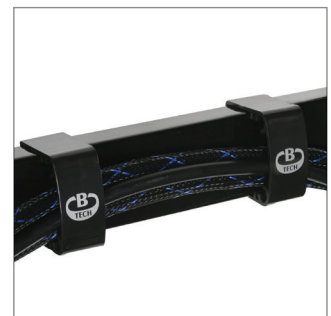
Easy tilt adjustment of +17° / -10°



Security locking screws provided



Space saving design - folds flat to the wall



CLIPLOGIC™ cable management

