



# MVL

## Omnidirectional Condenser Lavalier Micro- phone

The Shure omnidirectional condenser lavalier microphone, MVL, user guide.  
Version: 5.0 (2022-J)

---

# Table of Contents

|  |          |                       |          |
|--|----------|-----------------------|----------|
| <b>MVL Omnidirectional Condenser Lavalier Microphone</b> | <b>3</b> | <b>Specifications</b> | <b>4</b> |
|  |          | 3.5 mm Connections    | 5        |
| <b>General Description</b>                               | <b>3</b> | <b>Accessories</b>    | <b>6</b> |
| Features   | 3        | Furnished Accessories | 6        |
| <b>Using the Microphone</b>                              | <b>3</b> | Optional Accessories  | 6        |
|  |          | <b>Certifications</b> | <b>6</b> |

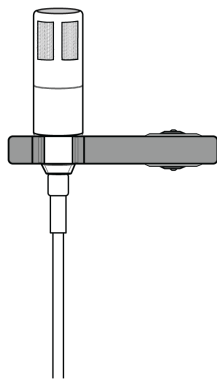
---

# MVL

## Omnidirectional Condenser Lavalier Microphone

---

### General Description

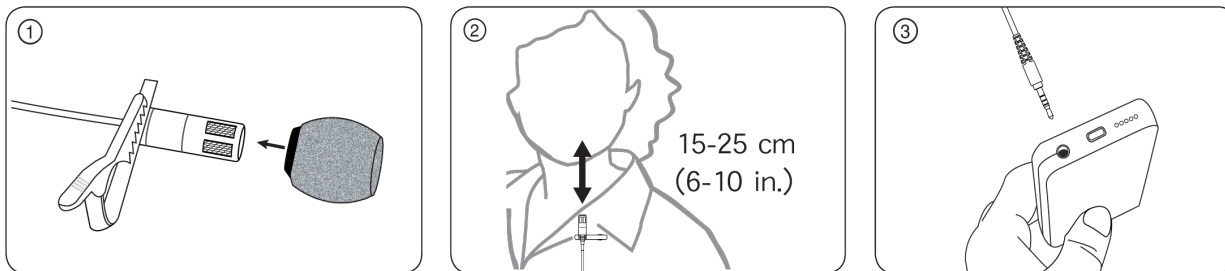


The Shure MOTIV MVL is an omnidirectional condenser lavalier microphone, featuring a 3.5 mm (1/8") Tip Ring Ring Sleeve (TRRS) plug for use with a portable recording-capable device. By plugging the MVL microphone into the headphone jack of a smartphone or tablet and opening recording apps such as the ShurePlus<sup>®</sup> MOTIV recording app, the user can easily and discretely capture high-quality audio. It is ideal for use in speech and other applications requiring minimal visibility.

### Features

- Superior audio clarity
- Effective immunity to audible interference
- Low self-noise
- More even, natural response across frequency range
- Less susceptible to distortion
- Matte black, sleek, low-profile design for inconspicuous placement
- Snug-fit foam windscreen provides additional protection from plosives and wind noise
- Includes protective storage pouch, tie clip, and windscreen
- The optional Rycote<sup>™</sup> Mini Windjammer fits over the included windscreen
- Legendary Shure quality and reliability

# Using the Microphone



1. Install the supplied snug-fit windscreen by sliding it over the microphone capsule.

*Note: Do not pull the windscreen too tightly over the microphone. Leave a small space inside the windscreen to allow for air movement.*

2. Attach the microphone to a shirt or other garment using the supplied tie clip. For best results, the microphone should be 15-25 cm (6-10 in.) away from the mouth.
3. Plug the 3.5 mm (1/8") plug into your recording device.

To further reduce plosives and wind noise, use the optional Rycote Mini Windjammer, which fits over the included foam windscreen.

---

## Specifications

### Microphone Capsule

MEMS

### Polar Pattern

Omnidirectional

### Frequency Response

40 Hz to 20,000 Hz (see frequency response graph)

350  $\Omega$

### Signal-To-Noise Ratio

65 dB

### Maximum SPL

124 dB SPL

### Dynamic Range

95 dB typical

### Sensitivity

-44.0 dBV at 1 kHz (Pa=94 dB SPL)

## Equivalent Output Noise

29 dB A-weighted

## Microphone Connector

3.5 mm (1/8") TRRS

## Microphone Bias

2.7 V DC through 2.2 K  $\Omega$  resistor

## Current Drain

245  $\mu$ A, typical

## Housing

Cast Zinc

## Dimensions

15.2 mm x 5.5 mm x 132cm H x W x D

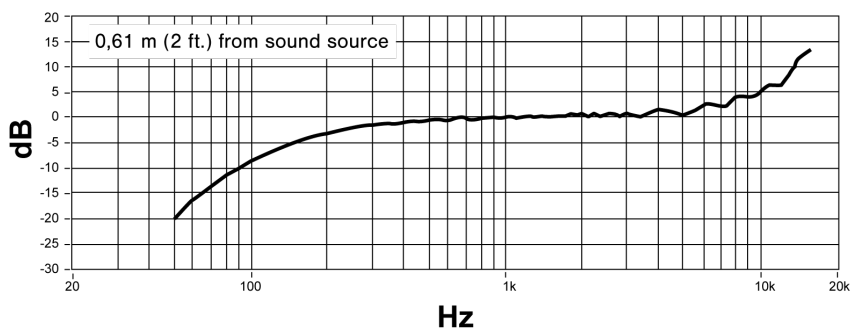
## Cable Diameter

1.6 mm

## Net Weight

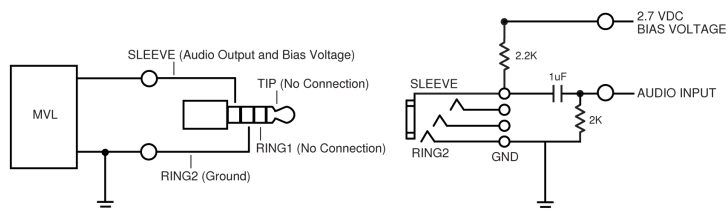
*with cable*

8.0 g (0.282 oz.)



Frequency Response

## 3.5 mm Connections



Microphone and Audio Input Connections for a Typical Device

## Accessories

### Furnished Accessories

|  |           |
|--|-----------|
| Carrying/Storage Bag                   | AMVL-BAG  |
| Black Snug-fit Foam Windscreen for MVL | AMVL-WS   |
| Black Metal Tie Clip for MVL           | AMVL-CLIP |

### Optional Accessories

|                                |          |
|--------------------------------|----------|
| Rycote Mini Windjammer for MVL | AMVL-FUR |
|--------------------------------|----------|

## Certifications

**Note:** Testing is based on the use of supplied and recommended cable types. The use of other than shielded (screened) cable types may degrade EMC performance.

| 部件名称   | 有害物质 |   |   |     |      |       |
|--------|------|---|---|-----|------|-------|
|        | 铅    | 汞 | 镉 | 六价铬 | 多溴联苯 | 多溴二苯醚 |
| 电路模块   | X    | ○ | ○ | ○   | ○    | ○     |
| 金属模块   | X    | ○ | ○ | ○   | ○    | ○     |
| 线缆及其组件 | X    | ○ | ○ | ○   | ○    | ○     |
| 外壳     | ○    | ○ | ○ | ○   | ○    | ○     |
| 电源适配器* | X    | ○ | ○ | ○   | ○    | ○     |
| 电池组*   | X    | ○ | ○ | ○   | ○    | ○     |

本表格依据 SJ/T11364 的规定编制。  
 ○: 表示该有害物质在该部件所有均质材料中的含量均在 GB/T26572 规定的限量要求以下。  
 X: 表示该有害物质至少在该部件某一均质材料中的含量超出 GB/T26572 规定的限量要求。  
 注: 本产品大部分的部件采用无害的环保材料制造, 含有有害物质的部件皆因全球技术发展水平的限制而无法实现有害物质的替代。  
 \*:表示如果包含部分

### CE Notice:

Hereby, Shure Incorporated declares that this product with CE Marking has been determined to be in compliance with European Union requirements. The full text of the EU declaration of conformity is available at the following site: <https://www.shure.com/en-EU/support/declarations-of-conformity>.

#### Authorized European Importer / Representative:

Shure Europe GmbH  
 Department: Global Compliance  
 Jakob-Dieffenbacher-Str. 12  
 75031 Eppingen, Germany  
 Phone: +49-7262-92 49 0

Fax: +49-7262-92 49 11 4

Email: [EMEAsupport@shure.de](mailto:EMEAsupport@shure.de)

This product meets the Essential Requirements of all relevant European directives and is eligible for CE marking.

