






ULWIII

First Automatic Production NPP LED Display

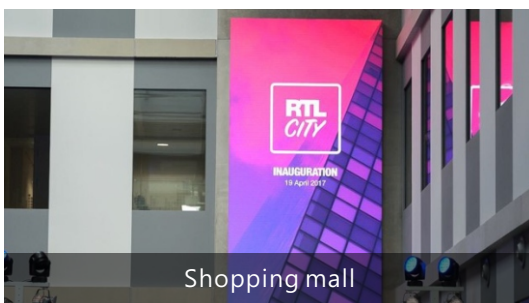
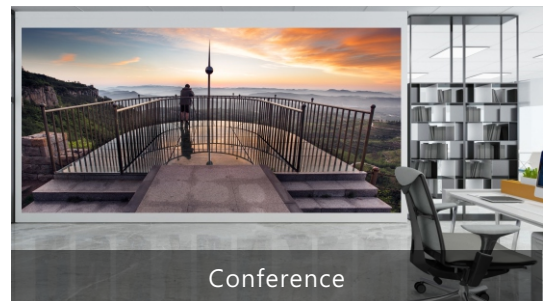
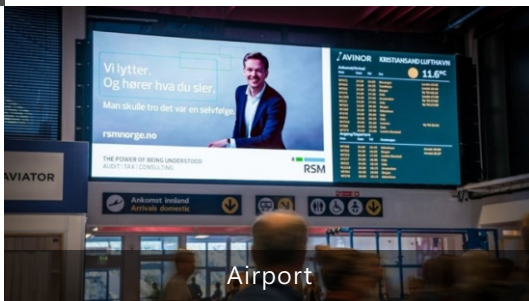
-  Smoother Image
-  High Stability
-  User-friendly Design
-  Smart Monitoring
-  Efficient Heat Dissipation



FEATURES

- Premium viewing experience
- Ultra stable operation
- Super lightweight and slim
- Intelligent management with carefree
- Less maintenance trouble

APPLICATIONS



SPECIFICATIONS

Parameter	Value			
Model	ULWIII 0.9	ULWIII 1.2	ULWIII 1.5	ULWIII 1.8
Pixel Pitch	0.9375mm	1.25mm	1.56mm	1.8mm
LED Type	IMD	3-in-1 SMD	3-in-1 SMD	3-in-1 SMD
Brightness	600cd/ m ²	600cd/ m ²	600cd/ m ²	600cd/ m ²
Pixels Per Module	160x360pixels	120x270pixels	96x216pixels	80x180pixels
Pixel Density	1,137,777pixels /m ²	640,000pixels /m ²	409,600pixels /m ²	284,444pixels /m ²
Pixel Per Panel	640x360pixels	480x270pixels	384x216pixels	320x180pixels
Module Size	150mm×337.5mm	150mm×337.5mm	150mm×337.5mm	150mm×337.5mm
Panel Size	600mm×337.5mm×45mm	600mm×337.5mm×45mm	600mm×337.5mm×45mm	600mm×337.5mm×45mm
Weight	5kg/panel	5kg/panel	5kg/panel	5kg/panel
Maintenance	Front	Front	Front	Front
Ingress Protection	Rear IP30	Rear IP30	Rear IP30	Rear IP30
Curve	0°~+3 (Concave)	0°~+5 (Concave)	0°~+7 (Concave)	0°~+7 (Concave)
Planeness	≤0.15mm	≤0.15mm	≤0.15mm	≤0.15mm
Material	Die-cast Aluminum	Die-cast Aluminum	Die-cast Aluminum	Die-cast Aluminum
Calibration	Support brightness and chroma	Support brightness and chroma	Support brightness and chroma	Support brightness and chroma
Color Temperature	2,000K-9,500K Adjustable	2,000K-9,500K Adjustable	2,000K-9,500K Adjustable	2,000K-9,500K Adjustable
Horizontal Viewing Angle	160°	160°	160°	160°
Vertical Viewing Angle	160°	160°	160°	160°
Contrast Ratio	5000:1	5000:1	5000:1	5000:1
Input Power<Max>	135W/panel	120W/panel	135W/panel	130W/panel
Input Power<Typical>	60W/panel	40W/panel	45W/panel	43W/panel
Input Voltage	AC: 100~240 V	AC: 100~240 V	AC: 100~240 V	AC: 100~240 V
Processing Depth	16bit	16bit	16bit	16bit
Refresh Rate	1920-3840 Hz	1920-3840 Hz	1920-3840 Hz	1920-3840 Hz
Video Frame Rate	50/60Hz	50/60Hz	50/60Hz	50/60Hz
LED Life Time	100,000 Hours	100,000 Hours	100,000 Hours	100,000 Hours
Operating Temperature /Humidity	10°C~+40°C/ 10~80% RH	10°C~+40°C/ 10~80% RH	10°C~+40°C/ 10~80% RH	10°C~+40°C/ 10~80% RH
Storage Temperature /Humidity	-20°C~+60°C/ 10~85% RH	-20°C~+60°C/ 10~85% RH	-20°C~+60°C/ 10~85% RH	-20°C~+60°C/ 10~85% RH

DIMENSIONS

