

# Aetria®

Control rooms made simple



## DESIGN, MANAGE, CONTROL

Aetria is Datapath's solution for the complete design, management, operation and monitoring of control rooms.

By connecting workstations, video walls and content, Aetria gives system integrators the freedom to design and deploy the right solution, while enabling operators to focus solely on their core objectives.

## CONTENTS

|                       |         |
|-----------------------|---------|
| Component Overview    | Page 2  |
| Aetria Designer       | Page 3  |
| Aetria Command Center | Page 4  |
| Aetria Workstation    | Page 7  |
| Aetria WallControl    | Page 9  |
| License Options       | Page 10 |
| Order Codes           | Page 11 |

Engineering the **world's best** visual solutions

**DATA PATH**  
EXCELLENCE BY DESIGN

# Component Overview

## **AETRIA DESIGNER**

Aetria Designer is dedicated and free design software for Aetria solutions and can be accessed online.

## **AETRIA COMMAND CENTER**

A unified interface for system integrators to design, manage and deploy control rooms solutions. Once deployed, control room operators can quickly and easily view the sources they need in real-time on any connected display surface.

## **AETRIA WORKSTATION**

Aetria Workstation gives control room operators the flexibility to view multiple sources on their local workstation screens.

Using single or multiple monitors, operators can segment their desktop into dedicated zones to display any combination of sources available in Aetria alongside their main desktop and local applications.

## **AETRIA WALLCONTROL**

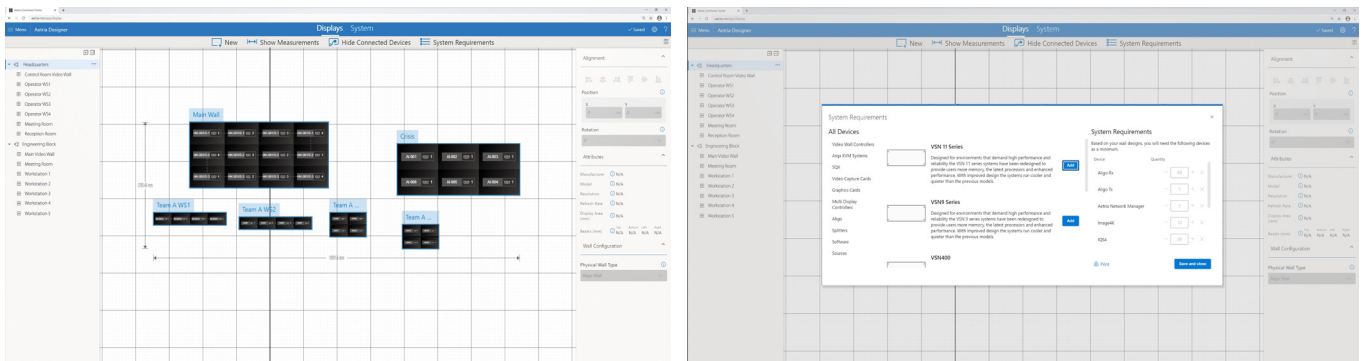
Aetria WallControl runs on a Datapath VSN controller to connect Aetria to a video wall, enabling seamless integration of video walls into the Aetria system.

# Aetria® Designer

## THE FREEDOM TO DESIGN

Aetria Designer is the dedicated design software for Aetria solutions. It is provided free-of-charge and can be accessed online on any through Chrome, Edge or Safari browsers.

Aetria Designer gives users the freedom to design Aetria solutions based on user requirements and requires technical capabilities and limitations of specific products. Designs can be created without being connected to a network, making it easy to create, review and approve designs anytime, anywhere.



*Aetria Designer helps users scope out their system requirements, working seamlessly with Datapath's leading video wall processors, AVoIP and hardware components.*

## BUILT-IN MONITOR DATABASE

With a dynamic monitor database built-in, video walls, workstations and screens can be quickly added to your designs. The database holds specifications on over 500 types of monitors, however, users can easily add additional monitor make/model information to this database.

## BILL OF MATERIALS TRACKER

The automated Bill of Materials (BOM) builder keeps track of all the equipment needed to implement your final solution. Export your BOMs as PDFs for recording or sharing purposes.

## MULTI-PURPOSE LAYOUTS AND DIAGRAMS

Your screen layout and connection diagram for each design can be exported as static images for inclusion in quotes, tender responses, or documentation.

## EXPORT PROJECT DESIGNS

Project Designs can be exported as Aetria Designer (.adf) files and imported into Aetria Command Center for implementation.

## COMPATIBILITY

Online version supported in Chrome, Safari, and Edge. Download version supported on Windows 10 operating systems.

## LANGUAGES

English, Chinese (Simplified and Traditional), French, German, Italian, Japanese, Korean, Polish, Portuguese, Russian, Spanish, Turkish.

## AVAILABILITY

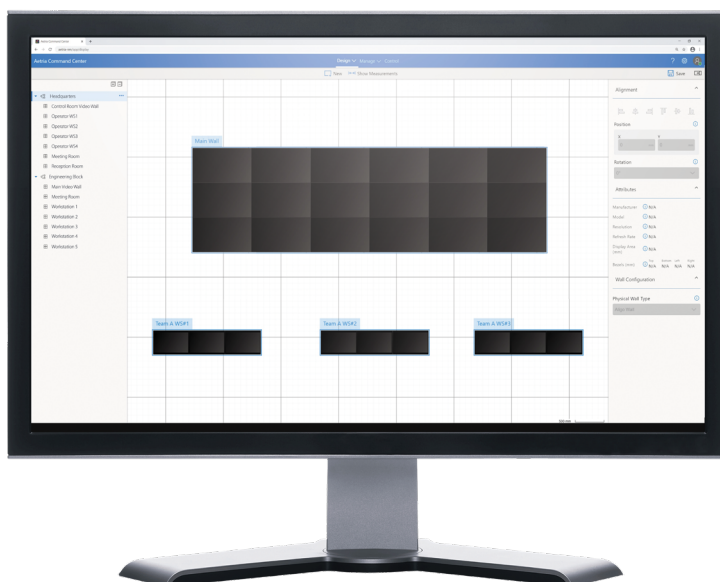
Aetria Designer is free to access online. Contact our Sales Team on +44 (0)1332 294441 or email sales@datapath.co.uk for more information.

# Aetria® Command Center

## COMPREHENSIVE AND UNIFIED INTERFACE

Sitting at the heart of the Aetria solution, Aetria Command Center is a comprehensive and unified interface for systems integrators to design, manage and operate control rooms solutions.

Once configured, control room operators use Aetria Command Center to quickly and easily view the sources they need in real-time on any connected display surface. With built-in monitoring and diagnostics, Aetria Command Center ensures that all components of the Aetria system are functioning as required and provides real-time alerts to enable swift resolution if any issues occur.



## SINGLE, ALL-IN-ONE APPLICATION

Aetria Command Center provides a single, centralized application for the complete end-to-end design, management and control of control room connectivity solutions.

## ANY SOURCE, ANY SCREEN, ANY TIME

With Aetria, every online source is multicast, giving users the flexibility to send multiple copies of each source to any connected workstation or video wall as and when needed.

## PROJECT IMPORT

Projects created in Aetria Designer can be imported directly into Aetria Command Center, allowing the set up of purchased equipment to be streamlined.

## WEB-BASED MANAGEMENT INTERFACE

The intuitive web-based interface allows users to quickly and easily set up all required rooms and locations, video walls and displays, operator workstations and available sources and content.

## TEMPLATES AND LAYOUTS

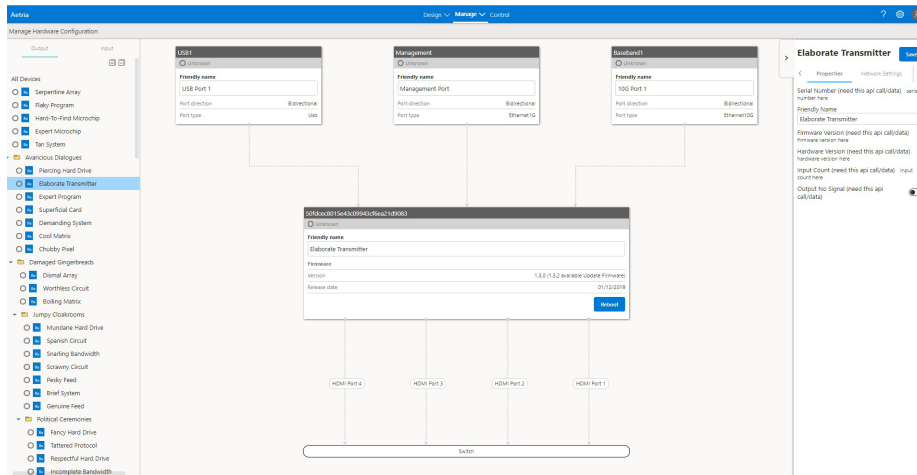
Using the built-in template and layout functionality, users can populate connected video walls or workstations with multiple sources with a single click.

Layouts are easy to design using the drag and drop interface, and saved layouts can be shared with other users. Any layout can be shown on any connected display surface of any size, from a large video wall to a single operator screen.

## SOURCE MANAGEMENT MADE EASY

With unique features for source management and identification, Aetria Command Center makes managing hundreds of sources easy. For each source, users can assign friendly names and add text labels (on-screen-display) to enable quick identification.

Cropping is available to allow selecting areas of interest within a source. Users can also create banners to add supplementary information to video walls or displays, and borders and frames can be added to sources to quickly highlight, group or identify them.



*Aetria Command Center ensures easy management of sources.*

## ENHANCED GRAPHICS FEATURES

Enhanced features allowing window capabilities to any content, on any end point. Operators will be able to categorize and identify sources, add supplementary information in overlays, and create custom banners for information displays on video walls and workstations.

- On-screen Displays
- Borders and Frames
- Banners

## SECURITY FIRST

User accounts and permissions are configured in Aetria Command Center by the allocated system administrator(s). Each configured user can be granted access to individual sources and screens to give full access control of all assets across the entire Aetria ecosystem.

## MONITORING AND DIAGNOSTICS

With built-in monitoring and diagnostics, Aetria provides real-time monitoring of all connected devices, ensuring smooth operation and swift response if issues occur.

## AVAILABLE LANGUAGES

English, Chinese (Simplified and Traditional), French, German, Italian, Japanese, Korean, Polish, Portuguese, Russian, Spanish, Turkish.

## EASY INSTALLATION

Aetria Command Center is delivered on 'Aetria Network Manager', a pre-installed 1U rack mount appliance for quick and easy installation.

## SPECIFICATIONS

For more information on the Aetria Network Manager appliance, please visit

[www.datapath.co.uk/datapath-products/aetria-control-room-solutions/aetria-network-manager/](http://www.datapath.co.uk/datapath-products/aetria-control-room-solutions/aetria-network-manager/)



## AETRIA COMMAND CENTER FEATURE LIST

| Feature                 | Description   |
|-------------------------|---|
| <b>DESIGN</b>           |   |
| Project Setup           | Import project design into Aetria<br>Confirm number of walls and workstations   |
| <b>MANAGE</b>           |   |
| Hardware configuration: | Device discovery and provisioning<br>Hardware source management and naming<br>Manage hardware settings and updates<br>Configure redundancy<br>Source preview<br>Aetria WallControl and Aetria Workstation endpoint management                       |
| Display Surfaces:       | Assign hardware devices to walls and monitors<br>Determine video wall presets   |
| Templates:              | Create and edit centralized library of templates for use on workstations and walls  |
| Sources                 | Manage all sources within the environment<br>Create new sources<br>Remote Connections (VNC / RDP)<br>Web pages<br>Network video streams<br>Composite windows<br>Carousels<br>Define local VSN applications<br>Bulk Upload of IP streams<br>Cropping |
| Asset Management        | Create banners, OSDs, borders for instant deployment onto sources   |
| Layouts                 | Create and edit centralized library of layouts for use on workstations and walls  |
| User Rights Management  | Fully secure user rights management with optional Active Directory integration<br>Create users and define roles to allow access to different sources and menu options   |
| <b>CONTROL</b>          |   |
| Walls                   | View all networked walls, add and clear wall content  |
| Sources                 | Add sources to the wall via drag and drop   |
| Templates and Layouts   | Add and clear templates and layouts from the wall   |
| Wall Properties         | View and edit properties including frame size/color, on/off   |
| Content                 | Search and filter content by name/tag   |
| Touch Interface         | The Aetria solution includes a responsive, web-based interface to allow basic touch control from a mobile or tablet device. The interface provides a simple tool to apply pre-set layouts to any video wall, or clear content from the wall.        |



# Aetria® Workstation

## EMPOWERING THE CONTROL ROOM OPERATOR

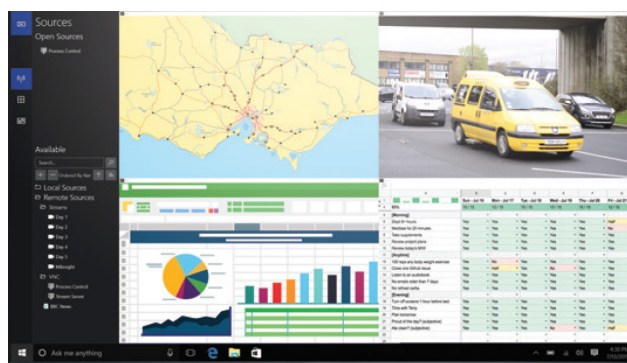
Aetria Workstation gives control room operators the flexibility to view multiple sources on their local workstation screens.

Using single or multiple monitors, operators can segment their desktop into dedicated zones to display any combination of sources available in Aetria alongside their main desktop and local applications.

Using Aetria Workstation, sources can be easily viewed, controlled or shared to other operator workstations or any connected video wall for wider viewing.



*Aetria Workstation gives operators the flexibility to segment their desktop into dedicated zones and create a 'personal video wall' to display.*



*Control any combination of sources available in Aetria alongside local applications.*

## USER-DEFINED ZONES

Using Aetria Workstation, users can segment their desktop surface into multiple areas or zones for viewing available content alongside local applications.

## SOURCE PREVIEW

Users can preview any configured source in the Aetria network on their local workstation.

## COLLABORATION IS MADE EASY

Aetria supports multicast for each source, allowing users to share multiple copies of sources to any connected screen(s) or video wall.

## TEMPLATES AND LAYOUTS

Using the built-in template and layout functionality, Aetria Workstation allows users to save their current view for quick recall when needed.

With layout 'auto-fit', users can show layouts saved on their local workstation on any connected display surface of any size, from a large video wall to a single operator screen.

## ENHANCED GRAPHICS FEATURES

Enhanced features allowing window capabilities to any content, on any end point. Operators will be able to categorize and identify sources, add supplementary information in overlays, and create custom banners for information displays on video walls and workstations.

- On-screen Displays
- Borders and Frames
- Banners

## WORKSTATION HARDWARE SUPPORT

Aetria Workstation is an operator PC that runs a Windows 10 environment. As part of Datapath's Aetria environment it allows users to utilize their own PC desktop and when combined with Datapath capture cards and approved graphics cards, content from the Aetria network can be delivered directly to the desktop. Third party devices that have been tested and qualified for use as an Aetria Workstation include Dell workstations, NVIDIA graphics cards and Intel graphics solutions. Contact a Datapath representative for more information on compatible products.

## MODELS AVAILABLE

### **Aetria Workstation Standard:**

- Support for up to 4 screens (either HD or 4K)
- Workspace templating
- Access to network sources (SoftSQX, Datapath agent, VNC, RDP only)

### **Aetria Workstation Professional:**

- All Aetria Workstation Standard features
- Support for more than 4 monitors
- Support for mixing HD and 4K monitors
- Access to Aligo and Arqa sources (capture card support)

## AVAILABLE LANGUAGES

English, Chinese (Simplified and Traditional), French, German, Italian, Japanese, Korean, Polish, Portuguese, Russian, Spanish, Turkish.

## COMPATIBILITY

Windows 10.

## MINIMUM REQUIREMENTS

Contact your Datapath Representative for more information on your Aetria Workstation options.



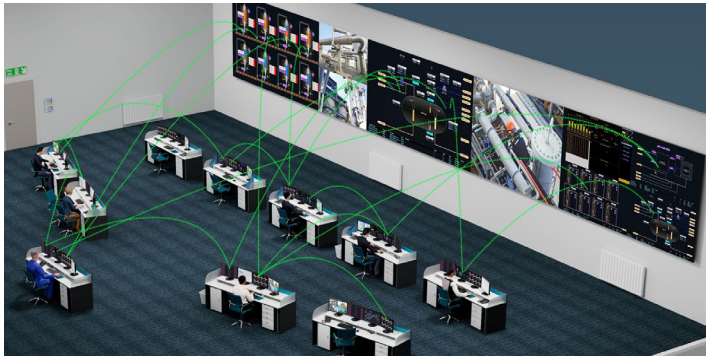
# Aetria® WallControl

## VIDEO WALLS, CONNECTED

Powered by Datapath's proven video wall technology, Aetria WallControl enables seamless integration of video walls into the Aetria system.

The hardware behind Aetria WallControl is Datapath's range of VSN systems. Video wall controllers that have been powering video walls in critical control rooms for over a decade. The Aetria WallControl software connects VSN powered video walls to the Aetria system and enables complete, seamless control through the Aetria Command Center.

Placement and organization of content on connected video walls is easy with support for layouts, templates, on screen display (OSD) and carousels.



## MULTI-WALL

Aetria allows multiple walls to be delivered by a single VSN system. Walls in separate areas of a building can be independently driven from a single location.

Multiple walls can be easily set-up and if required each wall can be assigned a unique set of sources or video resources.

## VISION ENCODE

Vision Encode allows sources such as HDMI feeds to be captured within the VSN video wall controller. The sources can be displayed on a video wall, or encoded into H.264 and streamed out so that the content can be displayed in other locations.

## SPECIFICATIONS

For the specifications on Datapath's VSN range of video wall controllers, please refer to the Datapath website at:

[www.datapath.co.uk/datapath-products/vsn-controllers](http://www.datapath.co.uk/datapath-products/vsn-controllers).



# Aetria® License Options

## YOUR REQUIREMENTS

Before choosing your license options, please discuss your requirements with a Datapath Representative.

## AETRIA NETWORK MANAGER

| License Type           | Description   |
|------------------------|---|
| Aetria Unlimited       | For installations that require VSN video walls, unlimited Aligo/Arqa endpoints and all types of workstations. |
| Aetria VSN Video Walls | For environments that exclusively utilize VSN video walls without Arqa/Aligo endpoints.                       |

## AETRIA WALLCONTROL TIERS

| Feature   | Standard  | Professional        |
|---|-----------|---------------------|
| Number of Connected Displays  | Unlimited | Unlimited           |
| Standard Sources (Vision, Web, Local Apps, Videos / images)*                                | Yes       | Yes                 |
| SQX / IP Decodes  | 8         | Limited by Hardware |
| Aligo/Arqa RX to capture card   | Yes       | Yes                 |
| Multi-Wall  | No        | Yes                 |
| Display Control   | Yes       | Yes                 |
| User Rights Management (URM)  | Yes       | Yes                 |
| VSN Redundancy (requires identical hardware to the VSN it is paired with including license) | Yes       | Yes                 |
| Network Manager Redundancy (requires additional complete hardware including license)        | Yes       | Yes                 |
| Tablet Interface  | Yes       | Yes                 |
| Vision Encoding   | No        | Yes                 |

## AETRIA WORKSTATION TIERS

| Feature  | Standard | Professional |
|--|----------|--------------|
| Number of Workstation Monitors                                 | Up to 4  | Unlimited    |
| HD Monitor Support   | Yes      | Yes          |
| 4K Monitor Support   | Yes      | Yes          |
| Mixed HD and 4K Monitor Support                                | No       | Yes          |
| Create Desktop Templates                                       | Yes      | Yes          |
| Access Aetria Network Sources (via User Rights Management)     | Yes      | Yes          |
| ActiveSQX and/or Video Capture Support                         | No       | Yes          |
| Access to Aetria Network Manager and Command Center Components | Yes      | Yes          |

# Order Codes

## AETRIA NETWORK MANAGER

| PRODUCT                                   | CODE                         |
|---|------------------------------|
| Aetria Unlimited License and Server       | AETRIA-LIC-UNL / AETRIA-SRV1 |
| Aetria VSN Video Walls License and Server | AETRIA-LIC-VSN / AETRIA-SRV2 |

## AETRIA WORKSTATION

| PRODUCT                                 | CODE          |
|---|---------------|
| Aetria Workstation Standard License     | AETRIA-WS-STD |
| Aetria Workstation Professional License | AETRIA-WS-PRO |

## AETRIA WALLCONTROL

| PRODUCT                                 | CODE          |
|---|---------------|
| Aetria WallControl Standard License     | AETRIA-WC-STD |
| Aetria WallControl Professional License | AETRIA-WC-PRO |

**Datapath UK and Corporate Headquarters**  
Bemrose House, Bemrose Park,  
Wayzgoose Drive, Derby,  
DE21 6XQ, United Kingdom  
☎ +44 (0) 1332 294 441  
✉ sales-uk@datapath.co.uk

**Datapath North America**  
2490 General Armistead Avenue,  
Suite 102, Norristown,  
PA 19403,  
USA  
☎ +1 484 679 1553  
✉ sales-us@datapath.co.uk

**Datapath Japan**  
Axon Hamamatsucho,  
1-1-23 Shibadaimon,  
Minato-ku,  
Tokyo-to,  
105-0012, Japan  
✉ sales-jp@datapath.co.uk

[www.datapath.co.uk](http://www.datapath.co.uk)

