

High Performance Wall Control

Reliability made simple

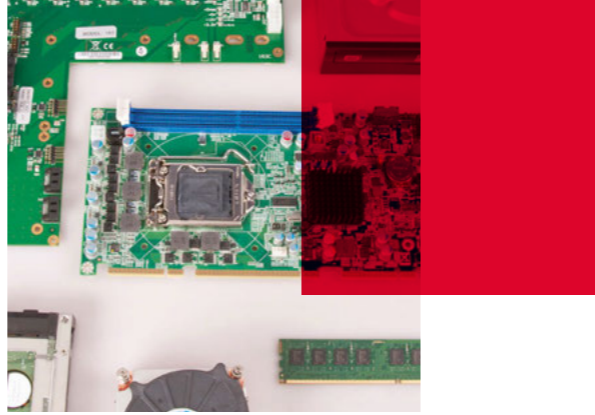


Engineering the **world's best** visual solutions


DATAPATH
EXCELLENCE BY DESIGN

Contents

- Datapath VSN wall controllers: The stats..... 4
- Range of sectors 5
- Datapath VSN Systems..... 6
- VSN System selection matrix 8
- Flexible capture technology built for the future 9
- Featured software for complete video wall control 10

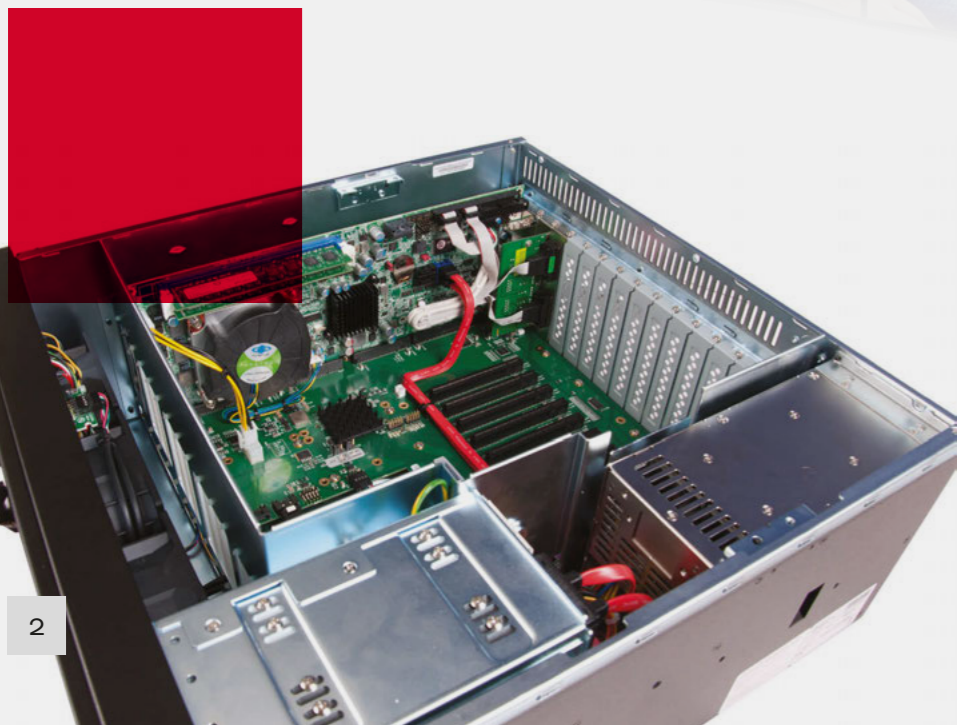


Datapath – engineering the **world's best visual solutions**

Providing complete AV management over control rooms of any size, Datapath's portfolio of video wall control systems offer scalable solutions for a wide range of applications.



VSN
SERIES



Datapath VSN wall controllers: **The stats**

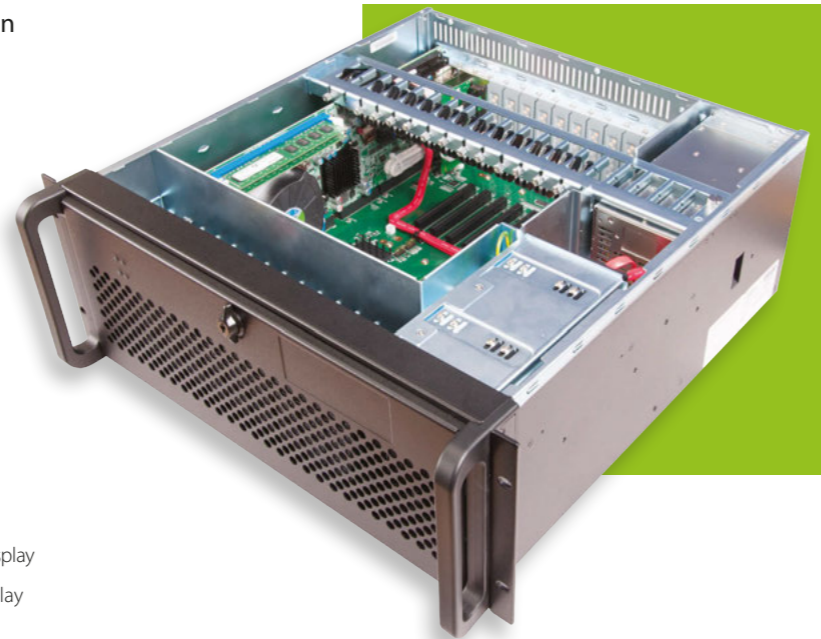
Supporting projects requiring small, medium or large scale video walls, Datapath VSN systems have been designed for use in environments ranging from command & control rooms, operating theatres and security suites to traffic management offices, utility operations and military installations.

Flexible and scalable

Datapath systems have been developed to operate with the latest generation of Datapath's world leading Image graphics, Vision video capture and SQX IP decode cards. Each system can be fully customised from a range of Intel performance processors and can accommodate any Datapath or compatible PCIe plug in card.

Features include:

- Complete control of a single Windows desktop
- 4K video capture and display
- Active SQX IP decodes
- HDCP capture and display



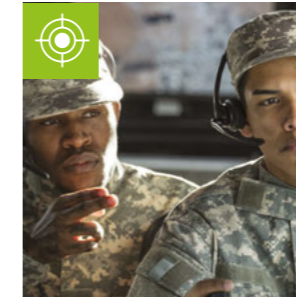
Ideal for a wide range of sectors:



Traffic management

No matter the control room size, Datapath VSN systems are designed perfectly for traffic management centers.

Where space is limited and low noise desirable, Datapath offers the VSNMicro. And for larger control centers the Datapath VSN Series of 9 or 11 slot systems offer the processing power required, with the ability to further increase capacity with Datapath expansion units.



Defense

Datapath VSN controllers are at the heart of the world's most reliable display wall solutions, a must when information transfer can be a matter of life and death.

With Intel processing, expansion units and Datapath's range of Image graphics, Vision capture and SQX IP decode cards, Datapath VSN systems offer the power, reliability and flexibility to meet even the most demanding requirements.



Process control

With capture requirements varying vastly, Datapath VSN systems provide the reliability, flexibility and scalability for process control monitoring.

Designed to work with Datapath's Image graphics, Vision capture and SQX IP decode cards, no matter the complexity, a solution is possible with Datapath video wall control systems.



Security suites

Datapath VSN systems are engineered from the ground up with reliability in mind, and are perfect for when around-the-clock monitoring is required.

All systems contain powerful, high quality industrial components and are rigorously tested to ensure they can meet the demand of 24/7 operation.

And many more...

VSN
ENGINEERED OVER
14 YEARS

OVER **80000**
SYSTEMS DELIVERED

WORLDWIDE
VISUAL SOLUTIONS

6 
COUNTRIES

VSN
SYSTEMS
CAN BE EXPANDED TO
50+
EXPANSION
SLOTS

x48
VSN
CONFIGURATIONS
SOLD

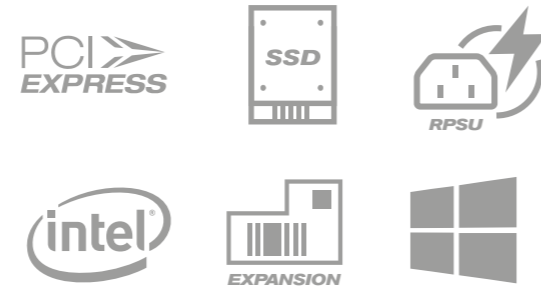


Datapath VSN systems

As technology develops Datapath continues to lead the market through innovation.

Datapath's current range of VSN systems have been improved over the first generation VSN systems to ensure that customers remain at the forefront of technology.

The 2nd generation VSN systems allow customers to take advantage of the very latest driver technologies, operating systems and graphical capabilities.



VSN 11 and VSN 9 Series

Designed for environments that demand high performance and reliability, Datapath's VSN 11 and VSN 9 Series provide users with more memory, the latest processors and enhanced performance.

With improved design, the systems run cooler and more quietly than previous models. Providing solutions for mission control rooms, military installations, logistic operations, security suites and many other command and control applications, Datapath systems are tested to ensure reliable 24/7 operation.

Standard features:

- 11 & 9 slot backplanes
- Dual SSD drives
- 16GB RAM minimum

Options & upgrades:

- Intel Core i7 or E3 Xeon processor
- Increased RAM and disk options
- Fully expandable



VSN400

The VSN400 can deliver up to 64 HD outputs (with IQS4) or 16 4K outputs from a single chassis, or create wall surfaces of up to 96 HD screens when combined with one of our expansion solutions. Integrate both graphics, capture and ActiveSQX decoding cards to create the system you need.

For example, drive a video wall with eight HD monitors displaying eight HD capture channels or create a 4K system with four 4K60 inputs and eight 4K60 outputs.

Standard features:

- Intel Core i5
- 32GB RAM
- 2 x 240GB SSD (RAID configured)

Options & upgrades:

- Intel Core i7 and i9
- 128GB RAM upgrade
- 2 x 480GB SSD (RAID configured)



VSNMicro 600

The VSNMicro 600 has been designed for areas where noise and space do not allow the presence of server racks. Offering a fully customisable, small footprint and almost silent system, the VSNMicro 600 has options available for different Intel processors, hard drives and memory configurations.

Standard features:

- Intel Core i5 processor
- 6 slot backplane
- Up to 480GB SSD
- 8GB RAM

Options & upgrades:

- Intel Core i7 processor
- Dual SSD drives
- 16GB RAM

VSN System selection matrix

	VSN 11 SERIES			VSN 9 SERIES		VSN400 SERIES	VSNMICRO	
Model	1172	1182	1192	972	982	VSN400	600	
MOTHERBOARD								
Processor	Intel® Core i7	Intel® E3 Xeon	Intel® Dual E5 Xeon	Intel® Core i7	Intel® E3 Xeon	Intel® Core i5 (optional upgrade Intel® Core i7 Intel® Core i9)	Intel® Core i5 (Intel® Core i7 optional upgrade)	
Memory (Standard)	32GB	32GB	64GB	32GB	32GB	32GB	8GB	
Memory (Max.)	32GB	32GB	128GB	32GB	32GB	128GB	16GB	
DISK STORAGE								
Standard	2 x 240GB SSD	2 x 240GB SSD	2 x 240GB SSD	2 x 240GB SSD	2 x 240GB SSD	2 x 240GB SSD	240GB SSD or 480GB SSD	
Optional Upgrade	2 x 480GB SSD	2 x 480GB SSD	2 x 480GB SSD	2 x 480GB SSD	2 x 480GB SSD	2 x 480GB SSD	2 x 240GB SSD or 2 x 480GB SSD	
OPERATING SYSTEM								
Windows 10 LTSC	✓	✓	✓	✓	✓	✓	✓	
BACKPLANE								
x4 Slots	0	0	0	8	8	0	0	
x8 Slots	11	11	11	1	1	4	6	
Total PCIe Slots	11	11	11	9	9	4	6	
Expandable	✓	✓	✓	✓	✓	✓	X	
Max. Outputs (HD)	32	32	48	32	32	64	24	
POWER								
ATX	N/A	N/A	N/A	600W	N/A	500W	500W	
RPSU	800W	800W	800W	600W	600W	600W	500W	
CONNECTIVITY PORTS								
USB3.0	2	2	2	2	2	6	4	
USB2.0	6	6	4	6	6	0	4	
Ethernet	2	2	2	2	2	2	2	
RS-232	✓	✓	✓	✓	✓	X	✓	
DIMENSIONS								
Size (l x h x w)	500mm x 175mm x 482mm Standard 4U rack mount						380mm x 176mm x 250mm	
Weight	19 – 25kg (shipped 30 – 33kg)						15 – 20kg (shipped 20 – 25kg)	

Flexible capture technology **built for the future**



Datapath have developed a sizeable portfolio of Vision capture cards for use in their systems. Ranging from 4K capture, to small profile cards, Datapath have a solution to meet all requirements.

Datapath Vision features

When used with Datapath capture cards, the VSN systems offer a range of Vision performance features:

1.

MultiStream

Allows independent control of multiple instances of a single input.

2.

LiveStream

Provides a low latency solution reducing time between capture and display.

3.

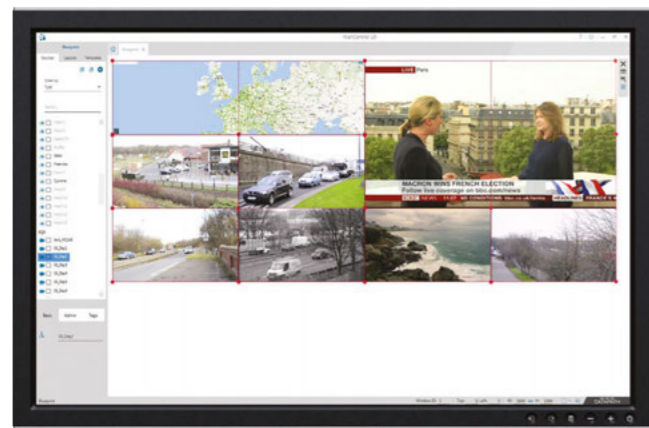
Mode detection technology

Allows a variety of signal types to be captured automatically.



Featured software for complete video wall control

Datapath have a range of tools to plan, execute and manage complete video wall set ups. Whether there is a small video wall in a single location or multiple large walls across a number of sites, Datapath have applications to manage, fault find and collaborate with when using video walls.



WallControl 10

Intuitive video wall management

WallControl 10 is an intuitive wall control software, providing users with the interface to quickly and effectively manage video wall content.

Available for Datapath's VSN and iolite range of video wall controllers, WallControl 10 allows users to easily control output sources such as IP feeds, video captures and local applications. These sources can be controlled by WallControl 10 when the most elaborate and complex wall scenarios are required. WallControl 10 is available in Standard and Pro versions.



WallControl 10 Standard

Identify, tag, and manage mixed media sources using templates.

Features include:

- Quickly create complex templates
- Easily identify sources
- Manipulate sources using simple drag and drop functionality
- Place any source in any window
- Use up to eight IP SQX sources
- View the wall in real-time
- Create, save and recall layouts

WallControl 10 Pro

Management of multiple video walls with assigned content access.

Features include:

- **MultiWall** - Multiple walls driven by one or more VSN systems. Input sources such as Vision capture, IP decode and local media update dynamically on active walls.
- **User Rights Management** - Registered users can be assigned access rights on a per wall basis. Individual roles can be granted differing permissions to affect wall content.
- **Unlimited IP SQX sources** - Accommodate as many IP SQX sources as the installed hardware will allow.
- Plus, all WallControl 10 Standard features.



WallControl 10 Integrations for Security Markets

Effective video wall management for security operators

Datapath WallControl 10 plug-ins are available for Milestone XProtect® and Genetec™ Security Center platforms.

The plug-ins provide users with the ability to seamlessly drive one or more multi-screen video walls directly from within the security suites, without the need to switch between different applications.

Operatives can display a variety of sources, including direct camera feeds, television broadcasts and any other localized content onto their video walls.

Features include:

- **Share View** - Display live and recorded camera feeds from within the operator view and send them to the video wall.
- **Track My View** - Automatically send operator views to the video wall, allowing the operator to focus on other priorities.
- **Extract Cameras** - Camera feeds can be cycled in loops; the Extract feature allows the camera feed currently 'on top' to be sent to the video wall. The camera of interest can be viewed on the video wall whilst the operator's local screen continues to cycle through camera feeds.
- **Deploy Layout Files** - Create and deploy saved layout files onto the video wall. This allows for captured video, such as a TV signal or PC to be directly displayed onto the wall alongside camera feeds.
- **User Rights Management** - Prioritize video wall zones by assigning different management levels to users.

Aetria Control rooms made simple

Aetria is Datapath's integrated solution for the design, management, and operation of control rooms of any size.

With Aetria, System Integrators have the freedom to design and deploy the right solution by following a structured, integrated process.

Configuration of all connectivity to workstations, video walls, sources, layouts, and templates are managed and operated from a single interface.

Our Aetria WallControl software connects VSN controllers to the Aetria system, enabling seamless sharing and control of content across large-scale video walls.



Design, manage and operate your control room with Aetria.

For more information, on our wide range of video wall control systems contact us on **+44 (0) 1332 294441** or **+1 484 679 1553 (US only)**, alternatively email **sales@datapath.co.uk**.

**Datapath UK and
Corporate Headquarters**
Bemrose House, Bemrose Park,
Wayzgoose Drive, Derby,
DE21 6XQ, United Kingdom

☎ +44 (0) 1332 294 441
✉ sales@datapath.co.uk

www.datapath.co.uk

Datapath North America
2490 General Armistead Ave,
Suite 102, Norristown,
PA 19403,
USA

☎ +1 484 679 1553
✉ sales-us@datapath.co.uk




DATAPATH
EXCELLENCE BY DESIGN