

65" Interactive Flat Panel

40 simultaneous touch points LED ULTRA HD

Integrated touch | Infrared technology
16Wx2 integrated speakers | Ambient light sensor
USB Type-C Full-Link

HV6531W

65" RDM-READY INTERACTIVE FLAT PANEL

65" 75" 86"

5 Year Warranty



Zero Gap Technology allows sharper images with better contrast and reduced glare.

Automatic brightness adjustment via ambient light sensor.



Infrared technology touch screen; usable even with gloves or any other solid object.

Anti-glare tempered glass with Mohs 7 4mm thickness.



Integrated 16Wx2 front stereo speakers
Total power 32W



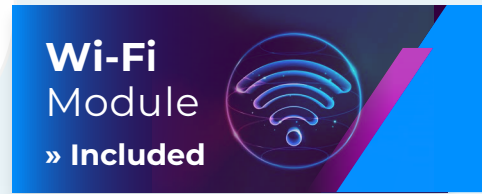
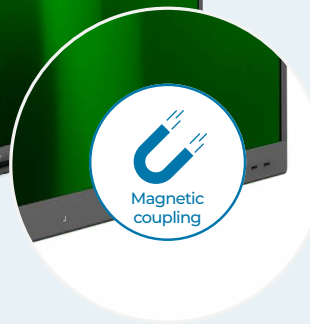
HDMI 4K input
Updated interface and electronics
1x LINE Out | 4x HDMI (4K max) In
1x VGA In | 4x USB 3.0 | 4x USB 2.0
1x USB Type-C Full-Link



Dual Core A73 + Dual Core A53 processor
3GB RAM, 32GB ROM
Standard OPS compatible slot



Remote Display Management license included (1 year)*
Software Touch Display + included (Perpetual license)
Software ScreenShare Pro included (Perpetual license)



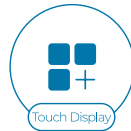
Zero Gap

Direct bonding

The touch panel and the glass surface are bonded without interspace by means of highly transparent liquid adhesives. There is therefore no empty space between the outer glass and the LCD panel.

Touch Display +

Software Suite



3.0 Teaching Tools dedicated to teachers and students.
Note | Note plus | Capture (Perpetual license included).



RDM Ready

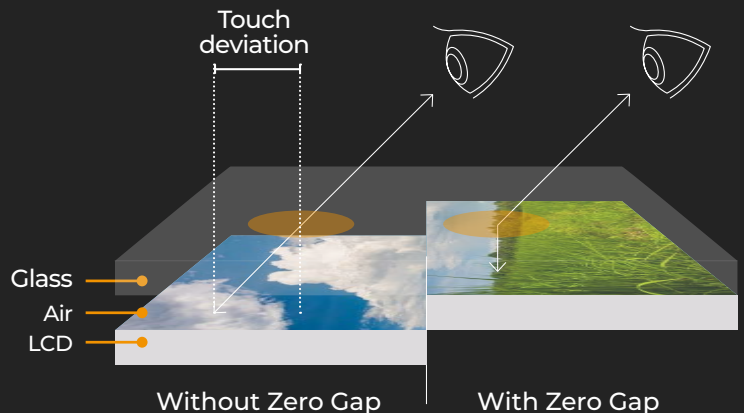
Remote Display Management



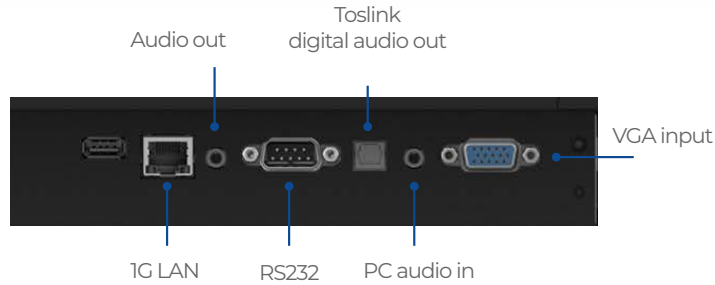
With Chimpa RDM you can remotely control, view and manage the functioning of the Interactive monitor with Android. Two steps are enough to register the device in your administrative panel.

What are the advantages of Zero Gap?

Thanks to the improvement of the optical refraction between touch and LCD, the monitor will have excellent readability, even in high light conditions, optimized contrast and less reflections. In addition, the monitor will be even more accurate to touch inputs. The absence of air prevents the formation of condensation and the proliferation of mold and bacteria on the screen, thus ensuring maximum hygiene.



Bottom panel

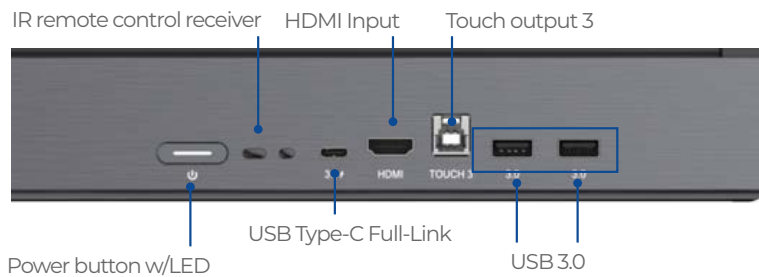
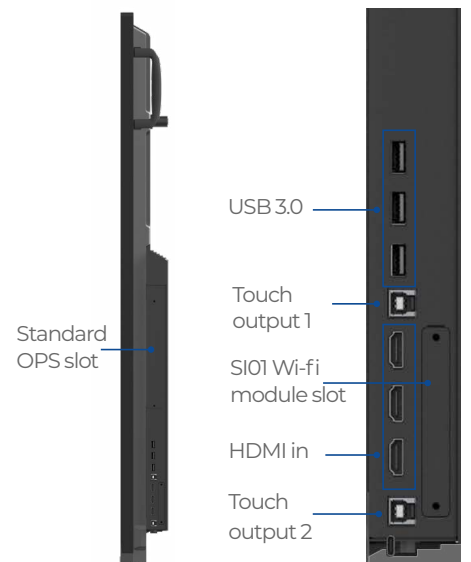


Pens with iron core to magnetically attach them to the monitor.

Front panel



Side panel



USB Type-C Full-Link

USB Type-C Full-Link technology uses a USB 3.2 Gen 2x2 connection featuring transfer speeds of up to 20Gbps using two 10Gbps lines simultaneously. This means having a single interface: with a single cable it will be possible to transfer 65 W of charging, video and audio up to 4K, computer touch signal and network connection between the display and compatible devices.

JUST ONE CABLE TO CONNECT YOUR DEVICE



Within just 30 min, battery recharge to 43%

Optimize the workflow with your APPs

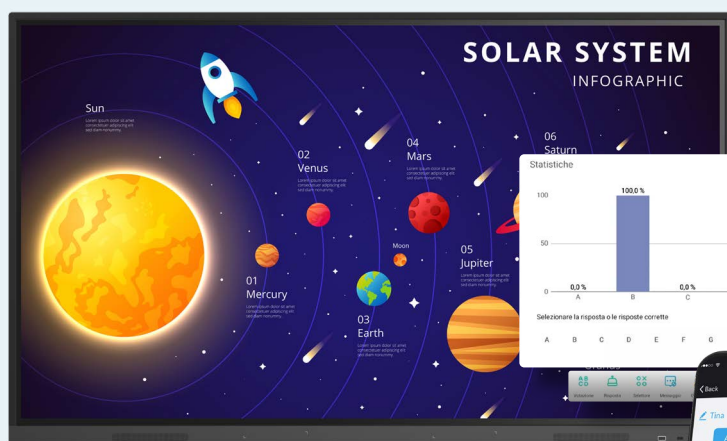
HELGI flat panels are compatible with the most requested applications for intensive daily use

All at your fingertips!



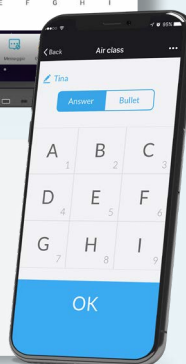
Note

Interactive board Android software (Perpetual license included)



Allow your students to use their smartphones!

After scanning the QR Code, student devices connected under the same network as the monitor will be able to interact with the teacher's messages and answer the questions and queries posed on the screen.



Intuitive interface

Simplified writing tools

Configurable workspace

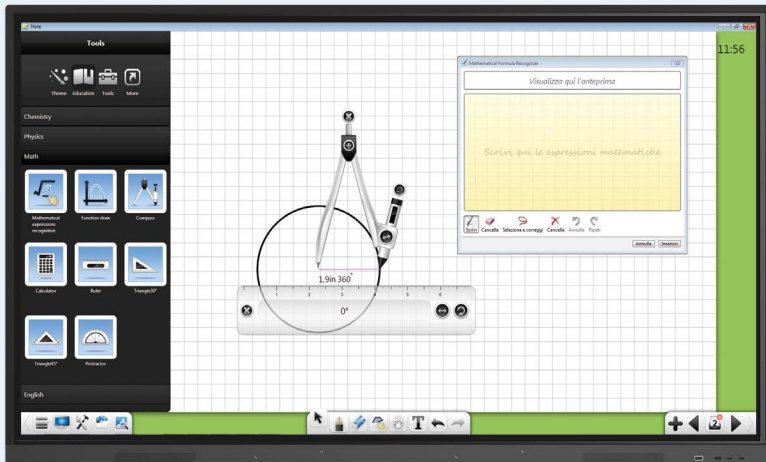
Advanced additional drawing tools

Screen and external webcam recording

Export and direct sharing in the Cloud

Note PLUS

Software for lectures and presentations (Perpetual license included)



Intuitive interface

Windows application

Speech synthesis of the text

Export to document format

Auto save | Auto update

PowerPoint presentation tool

Configurable page layout

Subject-specific teaching tools

Three different working modes

Hypertext links

Additional teaching tools

Advanced drawing mode

Capture

Recording & Editing video lessons (Perpetual license included)



Video recording

- Screen capture
- Capture from peripheral (webcam, document camera etc.)
- Full screen capture
- Capture a customized portion of the screen

Audio recording

- Microphone recording
- Recording from external audio source
- System audio recording

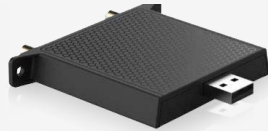
Video editing

- Unlimited tracks
- Clip cut
- Audio track separator
- Video material library
- Zoom and video transitions
- Insert text | Insert watermark
- Insert external files (pictures, audio etc.)
- Export in .mp4 format

EasiCapture is a complete software for recording and audio/video editing of lectures, video tutorials and video courses. It is an extremely powerful, flexible and easy-to-use solution designed both for teachers, who want to work in an innovative way, for example with a "flipped classroom" approach, and for the entire class when they want to create videos and films of any kind.

Device Slot-in

Wi-Fi and Bluetooth module S101



Wi-fi and Bluetooth module compatible with HELGI monitors. Allows you to connect the monitor to the Wi-Fi network using the integrated slot.

Standard OPS



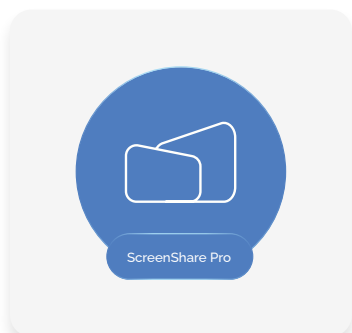
PC slot-in connected to the display through a single interface, perfectly integrated into it.

Available with
Intel processor i3/ i5/ i7
RAM 4/8/16 GB
SSD 128/256/512 GB

Available software

Chimpa RDM

Chimpa RDM is a Remote Display Management software solution which allows you to manage, monitor, diagnose and protect devices with Android, used within your organization from data theft and computer intrusions. You need just a few minutes to activate Chimpa and its ease of use makes it suitable even for inexperienced users. First year license included.



ScreenShare Pro

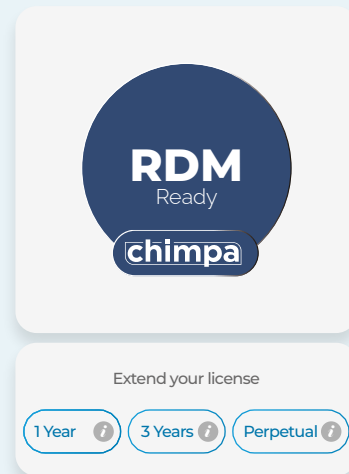
Wireless mirroring, file sharing and multidevice collaboration. Compatible with Windows, MacOS, Linux, iOS and Android. It allows to perform bi-directional mirroring in split-screen mode up to a 9 devices connected simultaneously.

Remote Display Management

(1 year license included)

Chimpa RDM is a remote device management solution specifically developed for interactive monitors. Thanks to its advanced features and its versatility, Chimpa RDM can be used in various areas of use:

Offices Meeting rooms	Schools and training centers	Retail and Large distribution
--------------------------	---------------------------------	----------------------------------



[Activate your license](#)

The main features of Chimpa

App and content distribution

With Chimpa you can distribute apps and contents, private APKs, settings and updates from a simple browser panel. In Chimpa Admin Panel you can use official stores or Cloud services, such as Google Drive, Dropbox and OneDrive. You'll just need to perform a few simple steps to send to all, or only to some, the managed devices specific documents and contents or an application to be used.

Kiosk mode and single-App mode

Thanks to Chimpa the flat panel can be set to a specific welcome screen for your school/organization or be configured in Kiosk mode to allow the use of only single application.

Profile management and restrictions

Chimpa allows you to manage user profiles, guest profiles and even specific restrictions based on a single device or a certain time slot. Chimpa keeps your company safe from any inappropriate use of devices, thus allowing you to manage separately personal and work data, in full compliance with GDPR at European rules an excellent solution in a BYOD approach.

Monitoring and remote assistance

Chimpa RDM can monitor and keep record of all hardware and software use reports, notifying any operating anomalies. Furthermore, thanks to the Remote Commands Input section, the supervisor can interact with the monitor as if he/she were physically close to it: this means that it is possible to provide technical assistance and maintenance remotely. Finally, from the Chimpa Admin Panel it is possible to view what the interactive monitor is showing in real time and take control of the device with a simple graphic interface.

Complete

Chimpa allows you to have full control over your organization's devices.

User-Friendly

Clear and intuitive Admin Panel, suitable for users of any level.

Safe

It protects your organization from inappropriate uses of devices, allowing you to manage the division between personal and corporate data.

Customizable

Specific configuration according to your needs and methods of use.

Certified

Chimpa's developer company is the only one in Italy to be an Android Enterprise Mobility Management service provider.

Easy Enrollment

HELGI is the only Italian brand able to offer you a complete package right from the first start-up of your devices in just a few taps.

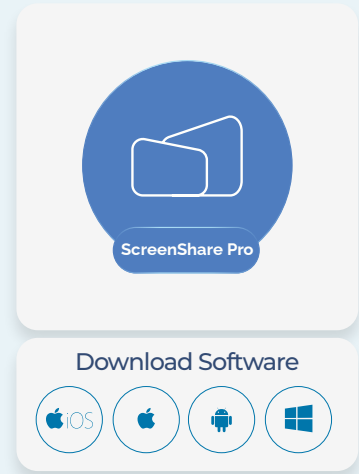
ScreenShare Pro

included

ScreenShare Pro is a wireless mirroring, sharing and multidevice collaboration solution. The license (perpetual) allows you to activate the ScreenShare Pro server app of the interactive monitors and there is no limit to the number of client devices (Windows, MacOS, Linux, iOS and Android) that can be connected to it using the same Wi-Fi network.

Among the main features, ScreenShare Pro allows for bi-directional mirroring (from server to client and from client to server) in split-screen mode up to a maximum of 9 devices connected simultaneously.


Remote control of Windows, MacOS and Linux devices through touch input from the monitor, sending of image, audio and video files in real time from client to server, annotation on shared documents.




Mirroring from device to Interactive flat panel

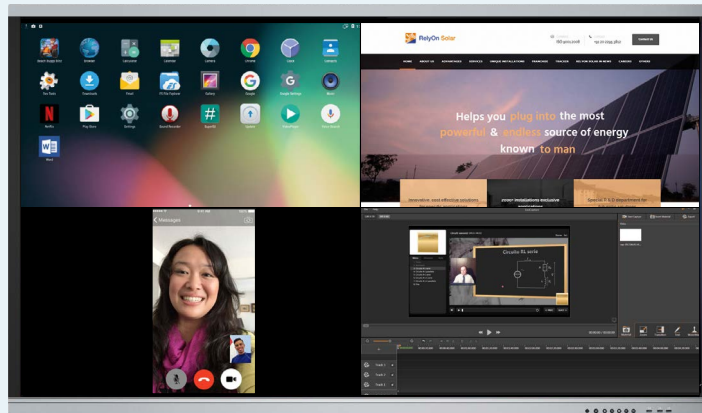
(Max 9 devices simultaneously)




 Streaming Video
Streaming Audio




 Streaming Video
Streaming Audio



 Streaming Video
Streaming Audio
Touch input

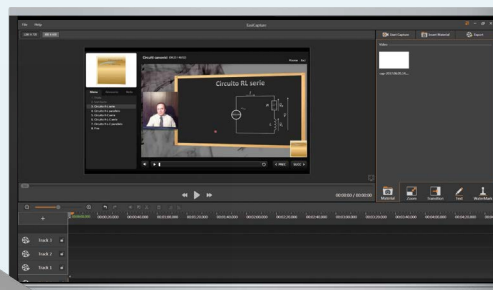


 Streaming Video
Streaming Audio
Touch input

Mirroring from Interactive flat panel to device

(Max 1 device)

A perfect solution for students with impaired vision



ScreenShare Pro

included

Devices 1 devices connected

iPhone Req to mirror

Connection monitoring and management

Access via numeric (standard) or alphanumeric (advanced) PIN

Streaming via native protocols (AirPlay, Miracast)

Sharing of multimedia files, images and documents

Real-time audio/video streaming

Remote control of the content displayed on the monitor

Mirroring from large flat display to device

Quick download of the client App for iOS/Android via QR code

Connection does not require Internet access

ScreenShare Pro

036720

Please enter this code on sender

1 Download sender
Please download and install sender on your device

2 Connect same network
Please connect your device and this screen to the same network.

3 Enter code
Please run the app on your device and input the pin code.

http://ds.r302.cc

TECV

0 3 6 7 2 0

Data Sheet

ScreenShare Pro

Code	HLG-SSP	
License type	Perpetual, to be activated on the monitor's Android OS after installing the .apk server file	
Compatibility	Android (Interactive flat panel server), Windows, MacOS, Android, iOS (device client)	
Connection	Wi-Fi on the same network (does not require access to the Internet)	
Access	Via numeric PIN	
Security	Display of client devices connected via Master Mode. Ability to accept/refuse connection requests and disconnect managed devices. Ability to define the refresh rate of the connection PIN. Possibility to activate the advanced connection via alphanumeric PIN.	
Split screen	Ability to view up to a maximum of 9 devices connected simultaneously on the same screen; + function to bring a device to full screen	
Presentations	Support for PowerPoint, KeyNote, PDF slide management; drawing tools and real time annotation on presentations, virtual laser pointer	
Client tools	iOS, Android	Sharing media files (photo, audio, video) from local library
		Sharing documents from local library
		Audio/video streaming sharing from the device camera
	Remote control of the contents displayed on the monitor (one client device at a time; possibility to choose between interaction via touchpad mode or motion mode). Supported commands: left click, right click, drag & drop, on-screen keyboard.	
	Mirroring from monitor to device with remote control of the contents displayed on the monitor (up to a maximum of 9 client devices at a time; supported commands: left click, right click, pinch and zoom, drag & drop, on-screen keyboard),	
	Mirroring from device to monitor via native protocols (AirPlay for iOS, Miracast for Android)	
Windows, MacOS	Mirroring from monitor to PC with remote control of the contents displayed on the monitor (one client PC at a time; supported commands: left click, right click, pinch and zoom, drag & drop, on-screen keyboard)	
	Mirroring from PC to monitor with remote control of the contents displayed on the monitor through the touch screen interface (up to a maximum of 9 client PC at a time; supported commands: left click, right click, pinch and zoom, drag & drop, on-screen keyboard)	

Motorized carts and stands

HMIFSTNDRD-F



Motorized carts for large flat displays. Convenient to move between rooms; the space between the wheels allows easy access even with a wheelchair. Bottom panel with customizable texture to adapt to the location.

Flat panels from 32" to 95" / VESA max 800x600
 Height adjustment: 60 cm
 Min / max height from the ground (in the center of the display): 84,7 / 167,8 cm
 Maximum capacity: 160 kg.

HMIPSTNDRD-W



Fixed motorized wall stand and weight unloading on the ground. Compatible with any type of wall. Designed to get the free distance between the wall and the back of the stand.

Flat panels from 32" to 95" / VESA max 800x600
 Height adjustment: 65 cm
 Min / max height from the ground (in the center of the display): 77,8 / 165 cm
 Maximum capacity: 150 kg.

HMIFMINI-F100



Mobile cart with double telescopic column with a thin profile. Convenient to move between rooms; the space between the wheels allows easy access even with a wheelchair. Display orientation only horizontal.

Flat panel from 32" to 95" / VESA max 800x600
 Height adjustment: 65 cm
 Min / max height from the ground (in the center of the display): 84,7 / 167,8 cm
 Maximum capacity: 100 kg.

Manual carts and stands

HLG604742B



Vertical adjustment with crank for correct positioning. Sturdy steel base and shelf for storing accessories. Shelf for webcam.

Flat panels from 60" to 100" / VESA max 1000x600
 Height adjustment: 40 cm
 Min / max height from the ground (in the center of the display): 123 / 163 cm
 Maximum capacity: 100 kg.

HLG604722B



Vertical adjustment with crank. Shelf for housing accessories and upper shelf for webcam. Display orientation both horizontal (landscape) and vertical (portrait).

Flat panels from 37" to 70" / VESA max 600x400
 Height adjustment: 40 cm
 Min / max height from the ground (in the center of the display): 119 / 159 cm
 Maximum capacity: 50 kg.

Carts and fixed stands

HLG604740B



Mobile cart adjustable in height only during assembly. Sturdy steel base and shelf for storing accessories. Shelf for webcam.

Flat panels from 60" to 100" / VESA max 1000x600
 Min / max height from the ground (in the center of the display): 135 / 167 cm
 Maximum capacity: 100 kg.

HLGFS16



Fixed wall bracket and weight unloading on the ground. Ideal for weak or plasterboard walls where it is required to unload the weight to the ground.
 Quick release system of the monitor.

Flat panels from 32" to 86" / VESA max 800x600
 Height adjustment: 60 cm
 Min / max height from the ground (in the center of the display): 110 / 170 cm
 Maximum capacity: 90 kg.

HLGMOVMIFFLX



Mobile cart with double telescopic column. Height adjustable only during assembly. Lightweight construction with solid H-shaped base.

Flat panels from 32" to 86" / VESA max 800x600
 Min / max height (in the center of the monitor): 19 / 219,3 cm
 Maximum capacity: 80 kg.

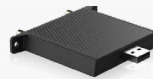


In addition to the supplied software, with HELGI you can expand the possibility of using the Interactive Flat Panel thanks to some specific accessories. The solutions are designed for the most frequent needs in the educational field, to make the Interactive Flat Panel the fulcrum of modern 3.0 classes.

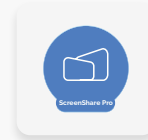
Wireless Collaboration

Only the power cord is visible. Thanks to the Wi-Fi SI01 module the flat panel will always be connected to the Internet, even where the LAN cabling is not prepared. The ScreenShare Pro license therefore allows to wirelessly connect personal devices. The HLGFS16 wall bracket allows installation on plasterboard walls and keeps all cables tidy.

1



SI01



HLG-SSP

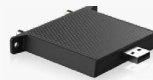


HLGFS16

Mobile Interactive Display

To make the Interactive Panel agile and independent from the dedicated workstation. Thanks to the dedicated cart (which allows passage between doors up to 2m high), the WiFi module and the standard OPS, the flat panel will no longer require cables and wall brackets and will be available for all classrooms/rooms.

2



SI01



HMIFSTNDRD-F



H64I7108256

Meeting Solution

The solution dedicated to distance learning: with the CAM340+ AVer Webcam and the integrated OPS, it will be possible to take advantage of the large size of the monitor and film the teacher, thus guaranteeing a complete didactic approach. The height-adjustable HLG604742B cart allows to adjust the position and height of the flat panel with a simple crank.

3



H64I7108256



6IU3100000AM



HLG604742B

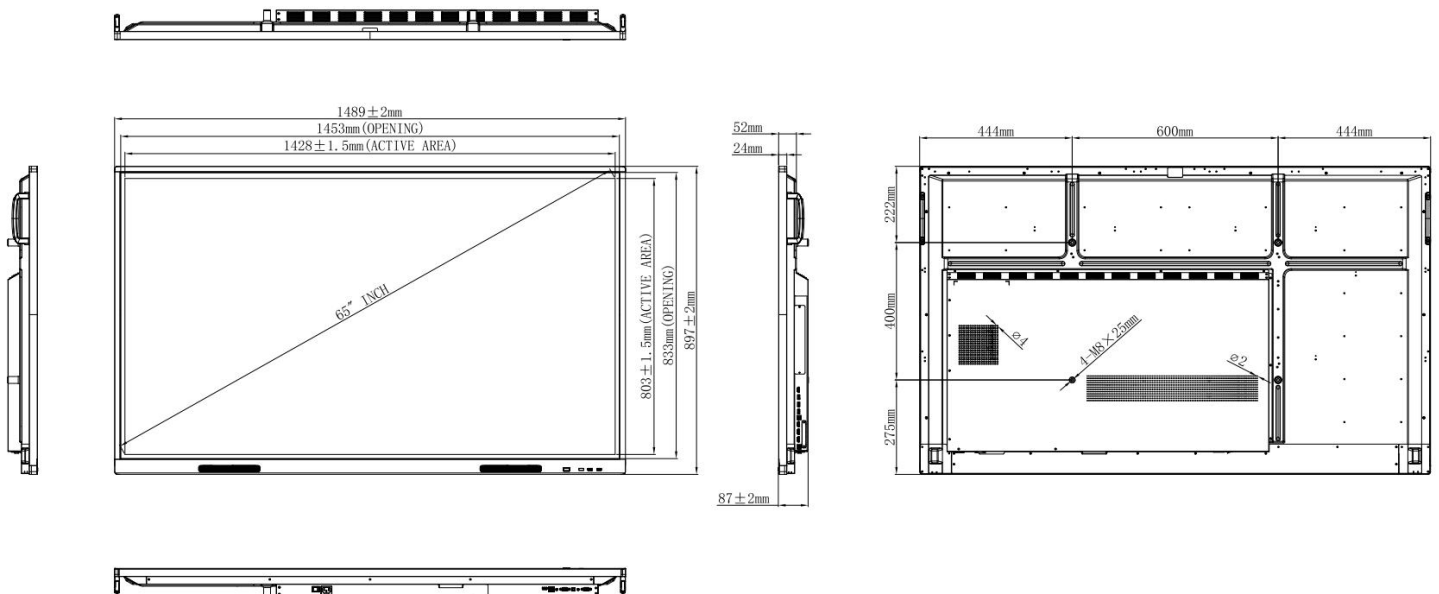
Customized solutions on request

Codice HV6531W		
DISPLAY	Lighting	Direct type LED
	Quality	Grade A
	Display Area	142,8 x 80,3 cm
	Diagonal	65"
	Aspect ratio	16:9
	Resolution	UltraHD 4K
	Colour depth	1.07 billion (10 bits)
	Brightness	500 cd/m ² (Typ)
	Contrast	6.000:1
	Viewing angle	178°
	Refresh rate	60Hz
	Response time	6 ms
	Sensors	Ambient light
	TOUCH	Touch technology
Driver		HID
Simultaneous touch points		Up to 40 (Windows)
Input tools		Fingers (even with gloves) or any other passive object
Object size		<3mm
Response time		<2 ms
TECH. DATA	Accuracy	±0.7 mm
	Input resolution	32767 x 32767
	Surface	Anti-reflective tempered glass 4mm Mohs level 7
	External dimensions	149 x 90 x 8,7 cm (W x H x D)
	Net weight	38,75 Kg
	VESA	600 x 400 mm

INTERFACE	Input	4x HDMI IN, 1x VGA IN, 1x PC AUDIO IN, 4x USB 2.0 (2x front), 4x USB 3.0, 3x TOUCH OUT, 1x RS232, 1x LAN (RJ45), 1x USB Type-C Full-Link (3.2 gen2x2)
	Output	1x Audio OUT, 1x COAX Out, 1x RJ45 Out
	Connectivity	Ethernet LAN
	Speaker power	16W x 2
	OPS slot	Compatible with Standard OPS 80pin
	ANDROID OS	System version
Compatible apps		GSuite, Google Apps, Microsoft Office, Microsoft Teams, Cisco Webex, Zoom, Google Chrome, Mozilla Firefox, Skype
Installation		Every apk compatible with IFP's Android version (installation can be disabled)
CPU		Dual core A73 + Dual core A53
GPU		Dual Mali G51
RAM		3 GB
SSD		32 GB
ENERGY	Maximum consumption	230W
	Standby consumption	≤0.5W (Standby)
	Lifetime	50.000 hours
	Operation time	24/7
ACCESSORIES	Content of the package	1x EU / UK Power cord (3m), 1x HDMI (3m), 1x USB (5m), User Manual, 2x Passive pens, 1x Remote control (batteries included), 1x Wi-Fi module
	Included software	Note (Android), Note ^{PLUS} (Windows), Capture (Windows), ScreenShare Pro (Android)
	Included Chimpa RDM license	1 year since enrollment*
Certifications		Warranty
EnergyStar**, ROHS, CE		5 years with replacement
Admitted languages		Catalan, Czech, Danish, German, Estonian, English, Spanish, French, Croatian, Italian, Hungarian, Dutch, Norwegian Polish, Portuguese, Romanian, Turkish Swedish, Greek, Russian, Arabic, Chinese Japanese.

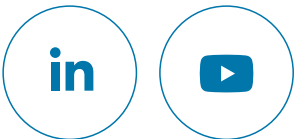
Environmental Conditions

Operation Temperature	Operation Humidity	Storage Temperature	Storage Humidity	Altitude
0°C~40°C	10%~90%RH	-20°C~ 60°C	10%~90%RH	below 5000 meters



* Warning: Chimpa RDM license is included in Interactive Flat Panel's price, but needs to be activated by the user. To manage the procedure, please contact education@ligr.it
 ** Compliant with European Directive 2009/125 / EC, known as ErP "Energy related Products" equivalent to American Energy Star





www.HELGI-europe.com

HELGI Europe
education@helgi-europe.com
business@helgi-europe.com

#250222HV6531W_EN

Distributor