



wePresent SharePod

User's Manual

Version: 2.0

Table of Contents

1	Overview	3
2	Package Contents	4
3	Physical Details	4
4	What You Need	5
5	wePresent SharePod Pairing	5
5.1	Auto Pairing (Recommended).....	5
5.2	Manual Pairing.....	6
6	wePresent SharePod Mirroring	7
6.1	SharePod Mirroring.....	7
6.2	Advanced Collaboration with wePresent Units	7
7	Web Admin	8
7.1	Log into Admin Panel	8
7.2	System Status	9
7.3	Device Setup.....	10
7.4	Network Setup	11
7.5	WiFi Setup	11
7.6	Change Passwords.....	12
7.7	Reset to Default	13
7.8	Firmware Upgrade.....	13
7.9	Reboot System.....	14
7.10	Logout.....	15
	Appendix: SharePod LED Status	16

1 Overview

wePresent SharePod is a unique pairing solution to wirelessly connect an HDMI source to a wePresent unit (WiPG-1000, WiPG-1600, WiPG-2000, WiPG-1600W or WiCS-2100), enabling seamless collaboration in meetings and classrooms.

Users should pair the SharePod to a wePresent unit via a micro USB cable (the pairing is needed only for the first time), and connect the SharePod to an HDMI source via an HDMI cable. This will allow full audio/video mirroring from the HDMI source to a display/projector via a wePresent unit. No software installation or configuration is required. Moreover, users can utilize the advanced features of the wePresent unit such as 4-to-1 projection/auto layout, annotation tools, WebSlides and conference control for better collaboration.

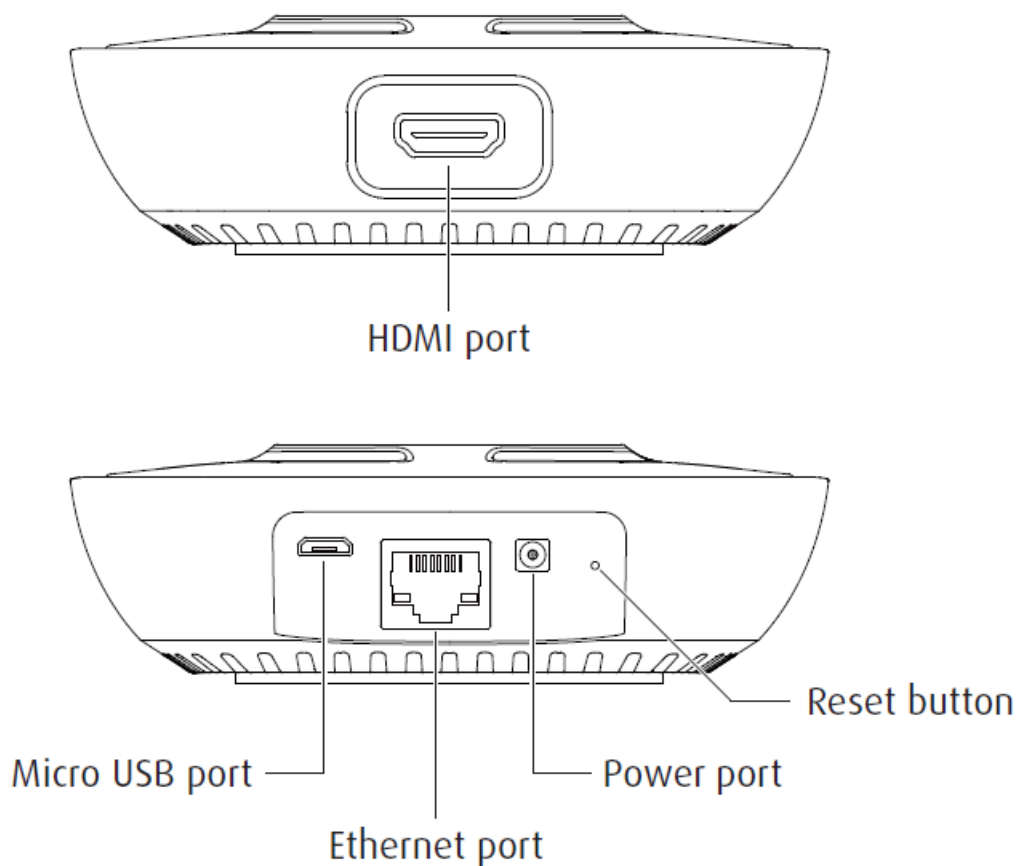
Key Features

- Wireless audio/video mirroring from any HDMI source.
- WiFi 802.11 a/b/g/n (5G/2.4G WiFi station mode)
- Auto pairing via USB.
- Support the "4-to-1 projection (quad-screen mode)/auto layout" feature of wePresent units.
- Support the "conference control" feature of wePresent units.
- Support the "WebSlides" feature of wePresent units.
- Support the "annotation tools" of wePresent units.
- Web management and web firmware upgrade.

2 Package Contents

- wePresent SharePod
- Power Adapter (DC +5V, 1.2A)
- Setup Guide
- Warranty Card
- CE DoC

3 Physical Details



Play/Stop Button	Press the button to start/stop mirroring
HDMI	HDMI connector
Micro USB	USB 2.0 port for device pairing
Ethernet	10/100M RJ-45 port
Power Jack	Power jack (5V/1.2A)
Reset Button	Press the reset button to execute a hardware reset

4 What You Need

- wePresent unit
(WiPG-1000/WiPG-1600/WiPG-2000/WiPG-1600W/WiCS-2100)
- Projector/display with VGA/HDMI interface
- HDMI source such as document camera, digital microscope, laptop, or DVD player.
- Micro USB cable
- HDMI Cable

5 wePresent SharePod Pairing

5.1 Auto Pairing (Recommended)

Attach the micro USB cable to the SharePod and the wePresent unit, and the pairing will be done automatically. The LED light of the SharePod turns solid red while the pairing is in progress. Please wait until you see the message "Pairing Completed/Finish SharePod Pairing" on the start/standby screen of the display/projector (connected to the wePresent unit). Then, remove the micro USB cable from the SharePod and the wePresent unit.


Note:

- a. SharePod supports WiPG-1000, WiPG-1600, WiPG-2000, WiPG-1600W, and WiCS-2100.
- b. Ensure that the firmware of the wePresent unit is updated to the

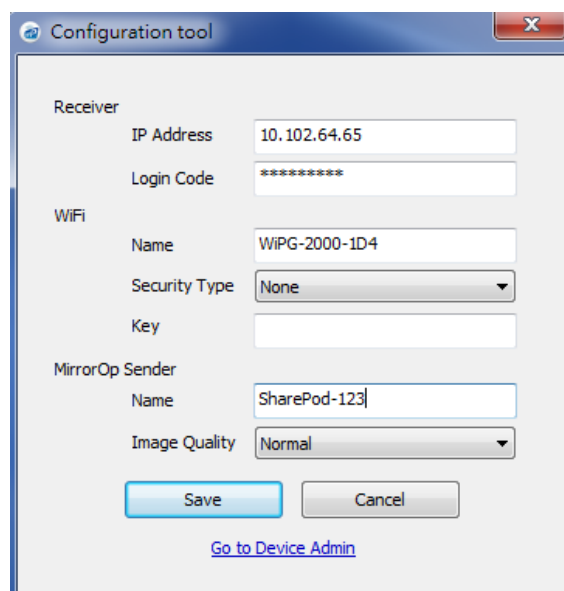
latest version.

c. The average pairing time is 20 seconds.

5.2 Manual Pairing

Attach the micro USB cable to the SharePod and your computer. Open the “WHE-100” drive on your computer, and launch the “Config” application  (“Configuration tool”). Then, you can begin configuring the pairing manually as below:

- **Receiver**
 - **IP Address:** the IP address of the target wePresent unit
 - **Login Code:** the login code of the target wePresent unit
- **WiFi**
 - **Name :** the WiFi name of the target WiFi Access Point device
 - **Security Type :** WiFi Security type, such as WEP/WPA-PSK/WPA2-PSK
 - **Key :** Security key of the target WiFi device
- **MirrorOp Sender**
 - **Name :** The name of the SharePod
 - **Image Quality :** High/Normal
- **<Save> :** Save the configuration information.
- **<Cancel> :** Close the dialogue without saving any changes.
- **<Go to Device Admin> :** Go to the SharePod web admin panel.



The screenshot shows a window titled "Configuration tool" with a close button (X) in the top right corner. The window contains several input fields and buttons:

- Receiver**
 - IP Address: 10.102.64.65
 - Login Code: *****
- WiFi**
 - Name: WIPG-2000-1D4
 - Security Type: None (dropdown menu)
 - Key: (empty text field)
- MirrorOp Sender**
 - Name: SharePod-123
 - Image Quality: Normal (dropdown menu)

At the bottom of the window, there are two buttons: "Save" and "Cancel". Below these buttons is a blue hyperlink labeled "Go to Device Admin".

6 wePresent SharePod Mirroring

6.1 SharePod Mirroring

- 1) After powering on the SharePod, it will then connect to the target wePresent unit. The LED light of the SharePod turns from solid red to solid blue when it successfully connects to the wePresent unit.
- 2) Attach an HDMI cable to the SharePod and an HDMI source. The screen mirroring between the HDMI source and the wePresent unit will begin after you press the central button of the SharePod. The LED light of the SharePod blinks blue during mirroring.

Note:

- a. Please pair the SharePod with the target wePresent unit before the connection.
- b. Please use the power adaptor to supply power to the SharePod.
- c. SharePod supports HDMI 720p/1080i/1080p.
- d. SharePod does not support HDCP content.
- e. If the connection between the SharePod and the wePresent unit is lost or interrupted, please press the central button of the SharePod again to resume the connection.
- f. SharePod light status/LED behavior: please refer to "Appendix – SharePod LED Status".

6.2 Advanced Collaboration with wePresent Units

- 1) Conference Control:
SharePod supports the "conference control" feature of wePresent units. In other words, the moderator/teacher can select the screen of an HDMI source (connected to the SharePod) to be displayed via the OSD (On-Screen Display) control or the web admin of wePresent units. If the screen projection (by pressing the central button of the SharePod) is rejected by conference control, the LED light of the SharePod will blink red and then turn solid blue to notify the user.

2) 4-to-1 projection (quad screen)/auto layout

The screen of any HDMI source (connected to the SharePod) can be projected to any quadrant of the display (connected to a wePresent unit), or projected to the display in the full-screen mode.

3) WebSlides:


View and save slides of the running presentation on your own HDMI device (connected to the SharePod).

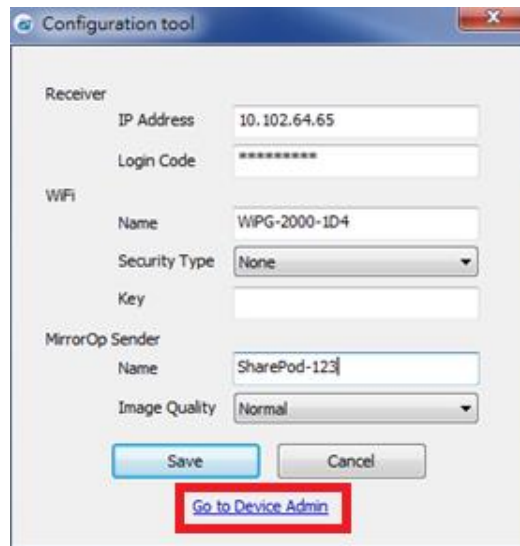
4) Annotation tools:

When the screen of an HDMI source is projected to the display (connected to a wePresent unit) through the SharePod, annotations can be made directly on the display and then saved to the USB drive (attached to the wePresent unit).

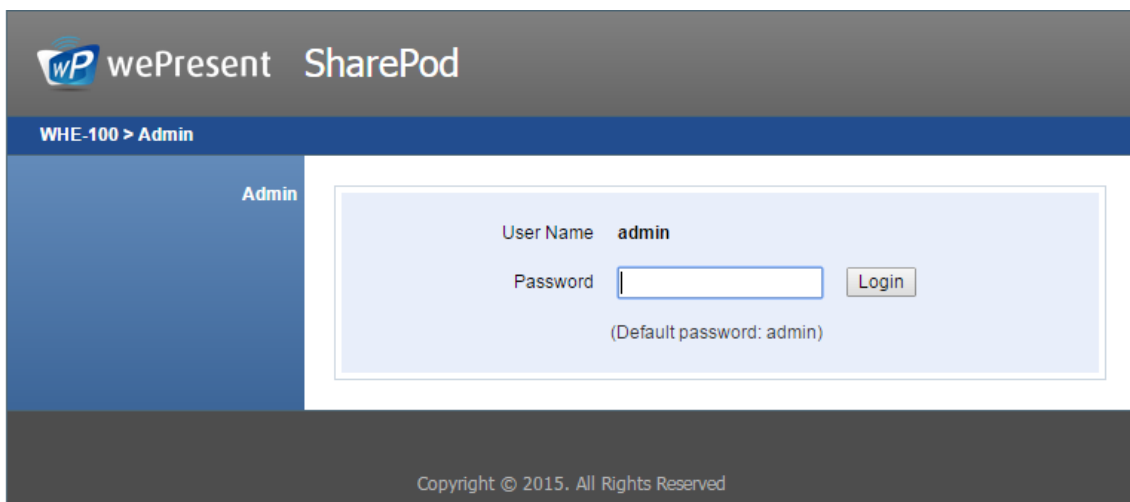
7 Web Admin

7.1 Log into Admin Panel

- 1) Generally speaking, users do not need to log into the admin panel unless:
 - (a) they want to connect to an external SSID (which is not the SSID of the target wePresent unit);
 - (b) they want to do the firmware upgrade;
 - (c) they want to restore the SharePod to factory default settings.
- 2) To log into the admin panel, you need to take the following steps:
 - Connect the SharePod to your computer through a micro USB cable.
 - Connect the SharePod to an existing IT network (you company or school network) through an Ethernet cable.
 - Open the "WHE-100" drive on your computer, and launch the "Config" application  ("Configuration tool").
 - Click "Go to Device Admin" on the UI (user interface) of "Configuration tool".



- Enter the password (default password: admin).



7.2 System Status

- 1) Click on the "System Status" option, it will show the current system status.

Model Name: WHE-100

Versions:

- **Firmware version no.:** Product firmware version number.

Network Status:

- **IP address :** IP address of the SharePod
- **Subnet Mask :** subnet mask
- **Default Gateway :** default gateway
- **Wireless MAC address :** wireless MAC address
- **Wire MAC address :** wire MAC address

WiFi Information:

- **WiFi Station Status** : The current status or the connected WiFi AP name.

wePresent SharePod

WHE-100 > Admin > System Status Logout »

System Status	Model Name	WHE-100
Device Setup	Versions	
Network Setup	Firmware Version	2.2.7.0
WiFi Setup	Network Status	
Change Passwords	IP Address	192.168.100.11
Reset to Default	Subnet Mask	255.255.255.0
Firmware Upgrade	Default Gateway	192.168.100.10
Reboot System	Wireless MAC Address	-----
	Wire MAC Address	00:12:5F:00:00:00
	WiFi information	
	WiFi Station Status	Disconnected

Copyright © 2017. All Rights Reserved

7.3 Device Setup

- 1) Click on the "Device Setup" option, it will show the device setting items.
 - **<Receiver IP Address>**: The IP address of the target wePresent device.
 - **<Login Code>**: The login code of the target wePresent device.
 - **<Sender Name>**: The name of the connected SharePod
 - **<Image Quality>**: Normal/High.

wePresent SharePod

WHE-100 > Admin > Device Setup Logout »

MirrorOp Setup	Receiver IP Address	<input type="text" value="10.102.64.65"/>
	Login Code	<input type="password" value="*****"/>
	Sender Name	<input type="text" value="SharePod-319"/>
	Image Quality	<input type="text" value="Normal"/>
		<input type="button" value="Apply"/> <input type="button" value="Cancel"/>

Copyright © 2015. All Rights Reserved

7.4 Network Setup

1) Click on the “Network Setup” option, it will show the network setting items.

< IP Setup >

- You can select “obtain IP address automatically” or “Use the following IP address” to manually enter the IP address.

The default setting is as follows:

- IP Address: 192.168.100.10.
- Subnet Mask: 255.255.255.0
- Default Gateway: 192.168.100.10
- DNS Server: 192.168.100.10

wePresent SharePod

WHE-100 > Admin > Network Setup Logout

System Status
Device Setup
Network Setup
WiFi Setup
Change Passwords
Reset to Default
Firmware Upgrade
Reboot System

IP Setup

Obtain an IP address automatically Use the following IP address

IP Address	192	168	100	11
Subnet Mask	255	255	255	0
Default Gateway	192	168	100	10
DNS Server	192	168	100	10

Apply Cancel

Copyright © 2015. All Rights Reserved

7.5 WiFi Setup

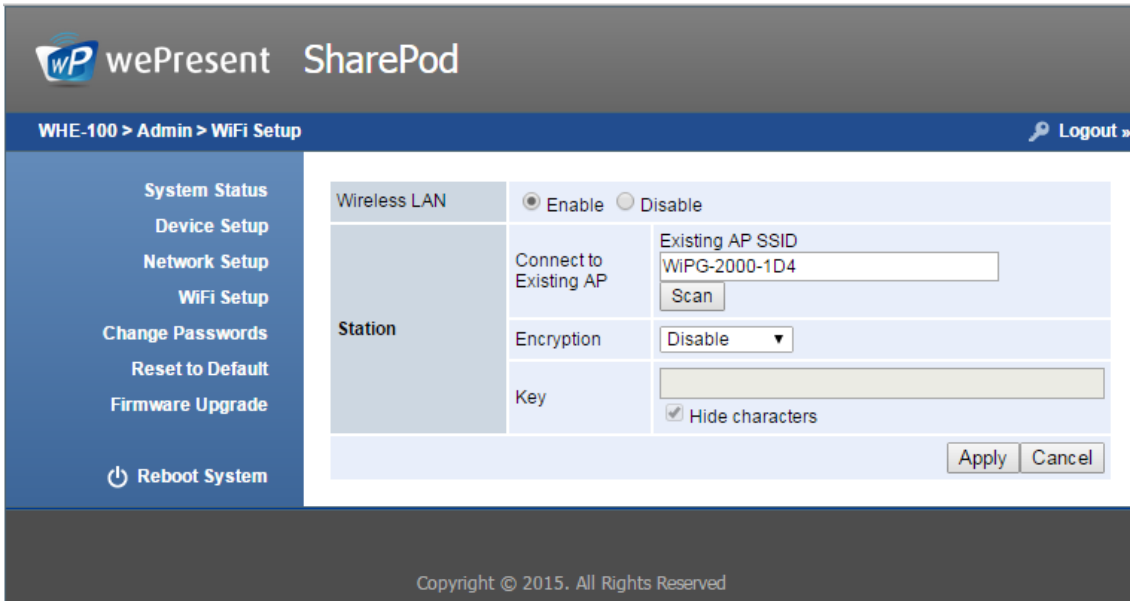
- Wireless LAN: The default setting is “Enable”
- Connect to Existing AP: Press the “Scan” button to scan all available AP devices, and then select the WiFi AP that you want to connect to.

Encryption: Select “Disable” or one of WEP/WPA PSK/WPA2 PSK

Key: If “Encryption” is enabled, you have to enter a key according to the encryption mode you selected. (If the length of the key entered is not sufficient or too long, a warning message will appear.)

Note: The Encryption and Key information must be consistent to the

exiting AP configuration.



Note: The WiFi 5G DFS band is not supported.

7.6 Change Passwords

- 1) Click on the "Change Password" option, you can change the password setting for "Admin".
 - <Enter New Password> (Length: up to 8 characters)
 - <Confirm New Password>
 - <Apply>: Confirm and save modifications.



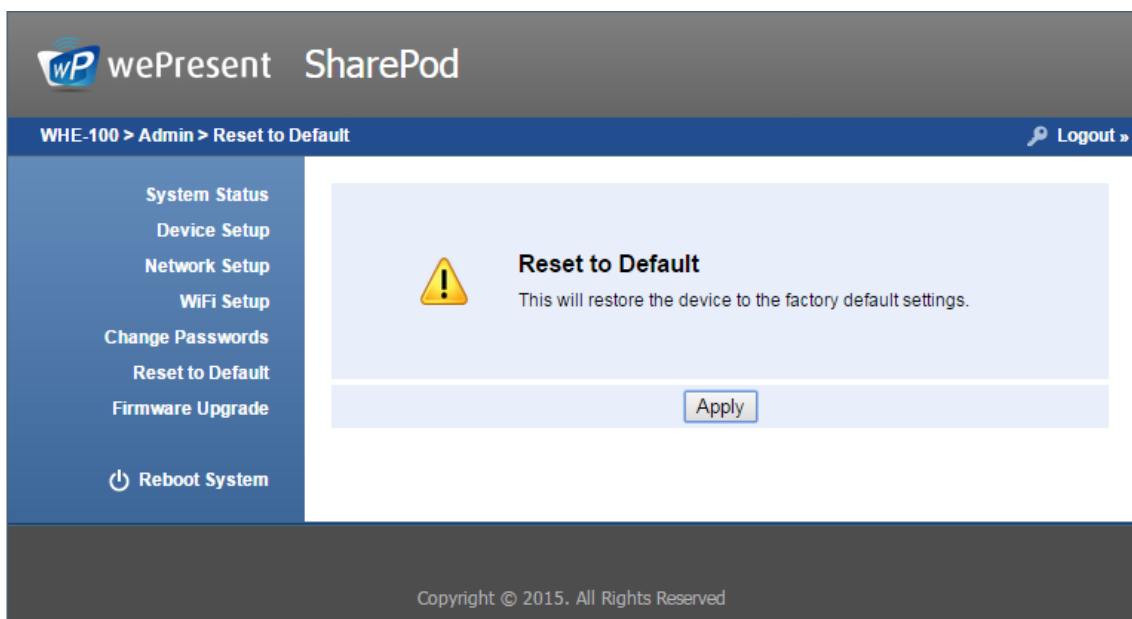
7.7 Reset to Default

- 1) Click on the "Reset to Default" option to restore the SharePod to factory default settings.

<Apply>: Confirm and take action.

***** You can also restore the SharePod to factory default settings by pressing the reset button. Please follow the below procedures.**

1. Long press the reset button and hold.
2. Turn on the SharePod and wait for more than 10 seconds.
3. Release the reset button.
4. The SharePod will be restored to factory default settings.



7.8 Firmware Upgrade

- 1) <Firmware Version> & <Release Date>: Show the current firmware on the SharePod.
- 2) <Check for Update>: Check the latest firmware available on the server.
- 3) **Firmware Upgrade:**
 1. Download the latest firmware version available to your local drive.
 2. Click <Browse> to specify the firmware file you want to upgrade.
 3. Click <Upgrade> to start.
 4. A warning message and a count-down counter will appear on the screen.
 5. After a few minutes, a message will be shown on the screen, telling you the upgrade is complete.

6. Restart the SharePod to apply the upgrade.

The screenshot shows the wePresent SharePod Admin interface. The breadcrumb path is "WHE-100 > Admin > Firmware Upgrade". The left sidebar contains navigation options: System Status, Device Setup, Network Setup, WiFi Setup, Change Passwords, Reset to Default, Firmware Upgrade (selected), and Reboot System. The main content area is titled "Firmware Upgrade" and displays the following information:

Firmware Version	2.2.7.0	<input type="button" value="Check for Updates"/>
Release Date	20171201	

Please stop the projection function first before you apply the Upgrade button!!

File Name: 未選擇任何檔案

Copyright © 2017. All Rights Reserved




Please wait while System burns new firmware into your device.

Warning: It needs to take 2-5 minutes to burn the file you transferred into flash memory. During this period, any interrupt such as shut down or reboot the system will cause system crash!!

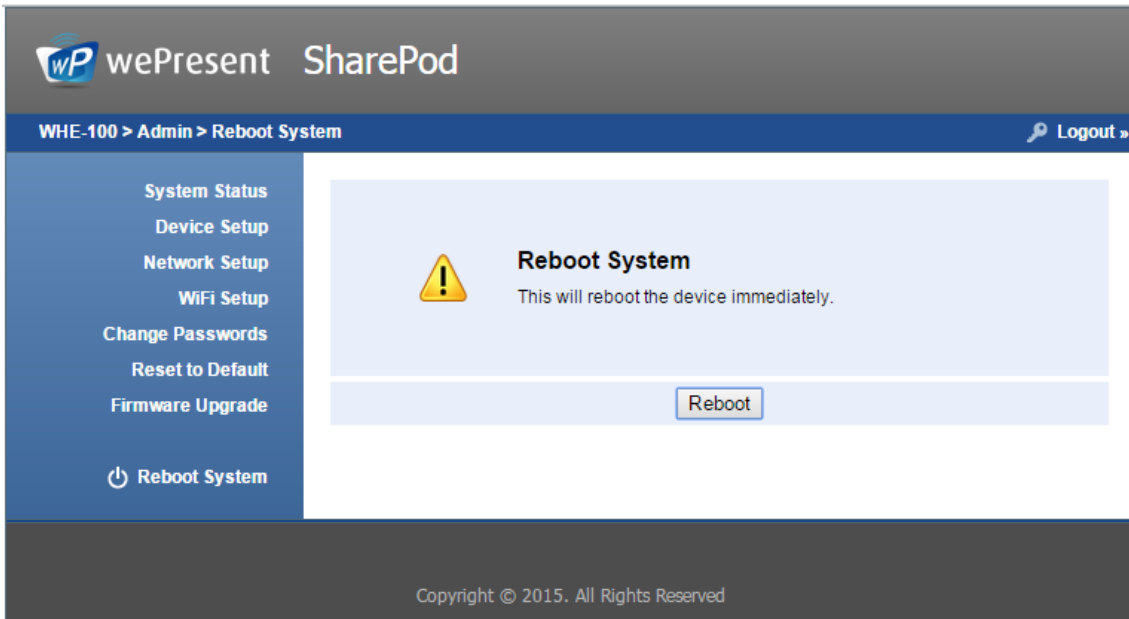
Estimated Time remaining: 90 seconds



 **Warning:** Do not power off the SharePod while firmware upgrade is in progress, otherwise your SharePod will be damaged and must be returned to the vendor for service and repair.

7.9 Reboot System

- ◆ Click on the "Reboot System" option to restart the SharePod.
- ◆ Click on the <Reboot >button: reboot system automatically.



7.10 Logout

- 1) Click on "logout" on the upper right corner to log out of the admin panel (and return to the admin home page).



Appendix: SharePod LED Status

LED Status	Description
Solid Red	Booting/Pairing/Unconnected
Solid Blue	Connected
Blinking Blue	Mirroring
Blinking Red and Turn Solid Blue	Mirroring Rejected by Conference Control
Blinking Red and Blue Alternately	Firmware Upgrade in Progress