

Event

All-white audio solutions
for sophisticated setups



K-ARRAY
Unique Audio Solutions

Event

In the realm of event productions, the equipment required for a successful event are as important as the event itself.

Careful consideration is given to every aspect so that they harmonize and do not detract from the look and layout of the occasion.

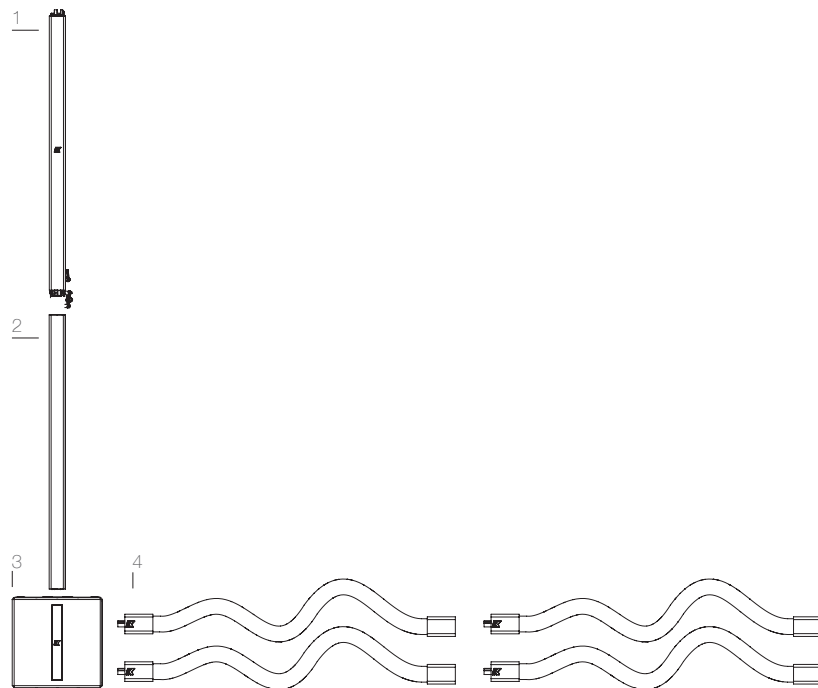
Providing a niche acoustics solution for the event productions market, the K-array Event line offers complete audio kits for this visually-driven segment.





Galateo Ricevimenti Catering - Palazzo Corsini, Florence

Event-KREV102



Building off our conveniently lightweight and devastatingly discreet Portable Systems, the Event-KREV102 is for those who need quality sound and a long throw.

Composed of a **Kobra-KK102 loudspeaker**¹ featuring Pure Array Technology to provide uniform coverage is paired with a **Thunder-KMT12 subwoofer**³ to deliver a big sound in the low range. The top is affixed to the sub via a **sleek extendable pole**² in the shape of a Kobra to create a line of continuity in its discreet design and to hide cables at the same time. The kit also comes with four **Anakonda-KAN200+ loudspeakers**⁴ for an alternative solution to the Kobra for easy integration in spatially-challenging applications. The kit is enameled entirely in white.





Event-KREV102

Datasheet



Kobra-KK102 I

Thunder-KMT12 I

FEATURES



Visually
Discreet



Lightweight



On-Board
Touch Screen



Compatible



Pure Array
Technology
(PAT)

Kobra-KK102 I

ACOUSTICS	
Power handling	400 W ^(AES)
Impedance	8Ω or 32Ω (selectable)
Frequency range	150 Hz - 20 KHz.
Maximum SPL	124 dB continuous - 130 dB peak
COVERAGE	
Horizontal	110°
Vertical	10° - 35° (selectable)
CROSSOVER	
Type	External Crossover required
Frequency	High pass @150 Hz, 24 dB/oct suggested minimum
TRANSDUCERS	
Full-range	16 x 2" Neodymium magnet with 0.75" voice coil
POWER AUDIO INPUTS	
Connectors	2 x 4-pin Speakon
Wiring	1+ 1- (signal IN & LINK); 2+ 2- (through)
SELECTION SWITCHES	
Vertical pattern	Spot - Flood
Impedance	16Ω - 64Ω
PHYSICAL OVERVIEW	
Dimensions	5.9 x 100.0 x 8.1 cm (2.93" x 39.37" x 3.18 ") ⁽¹⁾
Weight	4.8 Kg (10.58 lb)

Thunder-KMT12 I

ACOUSTICS	
Power handling	700 W ^(AES)
Impedance	8 Ω
Frequency range	40 Hz - 150 Hz ± 3dB (preset relating)
Maximum SPL	128 dB continuous - 134 dB peak
COVERAGE	
Horizontal	Omni°
Vertical	Omni°
CROSSOVER	
Type	DSP controlled
Frequency	150 Hz (preset dependent)
TRANSDUCERS	
Full-range	1 x 12" Neodymium speakers with 3" voice coil
AMPLIFIERS	
Type	1 modules class D - DSP controlled
Power	2x1000 Watt @ 8Ω
Protection	Dynamic limiter, over current, over temp, short circuits
PHYSICAL OVERVIEW	
Dimensions	32.6 x 32.7 x 43.5 cm (12.83" x 12.87" x 17.04") ⁽¹⁾
Weight	15.6 Kg (34.39 lb)

1. (W x H x D)

Notes for data

New materials and design are introduced into existing products without previous notice.

Present systems may differ in some respects from those presented in this catalogue.

Event-KREV102

Datasheet



Anakonda-KAN200+

Anakonda-KAN200+

ACOUSTICS	
Power handling	300 W ^(AES)
Impedance	32Ω - (8 Ω KAN200 + 8)
Frequency range	150 Hz – 18 kHz +/-6dB
Maximum SPL	102 dB (cont.) – 108 dB (peak)
COVERAGE	
Horizontal	160°
Vertical	10°
CROSSOVER	
Type	External Crossover required
Frequency	150 Hz 24dB/oct suggested minimum
TRANSDUCERS	
Full-range	16 x 1" Neodymium cone driver with 0.75" voice coil
POWER AUDIO INPUT	
Connectors	2 x 4-pin Speakon (1 female, 1 male)
Wiring	1+ 1- (signal IN & LINK) 2+ 2- (Through)
PHYSICAL OVERVIEW	
Dimensions	207.0 x 5.6 x 3.5 cm (81.49" x 2.2" x 1.4 ")
Weight	1.9 Kg (4.1 lb)
Notes for data New materials and design are introduced into existing products without previous notice. Present systems may differ in some respects from those presented in this catalogue.	

FEATURES



Weather
Resistant



Visually
Discreet

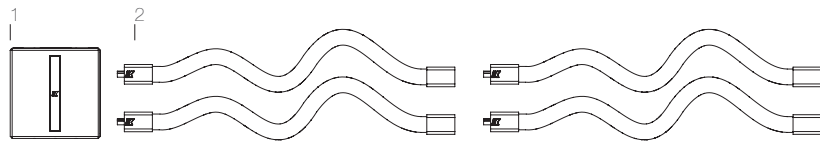


Bendable
Form



Pure Array
Technology
(PAT)

Event-KREV80



With impressive flexibility, the Event-KREV80 is a unique solution comprised of four **Anakonda-KAN200+** loudspeakers² designed to wrap and shape around the venue providing background music throughout your event. To drive the passive speakers, the set includes a **Thunder-KMT12** powered subwoofer¹ which features a high performance-to-size ratio that enables it to integrate seamlessly without attracting attention.

The entire kit is available in white.





Event-KREV80

Datasheet



Anakonda-KAN200+

FEATURES



Weather Resistant



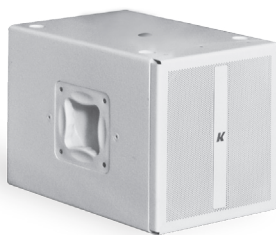
Visually Discreet



Bendable Form



Pure Array Technology (PAT)



Thunder-KMT12 I

FEATURES



Visually Discreet



Lightweight



On-Board Touch Screen



Compatible



Pure Array Technology (PAT)

Anakonda-KAN200+

ACOUSTICS	
Power handling	300 W ^(AES)
Impedance	32Ω - (8 Ω KAN200 + 8)
Frequency range	150 Hz - 18 kHz +/-6dB
Maximum SPL	102 dB (cont.) - 108 dB (peak)
COVERAGE	
Horizontal	160°
Vertical	10°
CROSSOVER	
Type	External Crossover required
Frequency	150 Hz 24dB/oct suggested minimum
TRANSDUCERS	
Full-range	16 x 1" Neodymium cone driver with 0.75" voice coil
POWER AUDIO INPUT	
Connectors	2 x 4-pin Speakon (1 female, 1 male)
Wiring	1+ 1- (signal IN & LINK) 2+ 2- (Through)
PHYSICAL OVERVIEW	
Dimensions	207.0 x 5.6 x 3.5 cm (81.49" x 2.2" x 1.4 ")
Weight	1.9 Kg (4.1 lb)

Notes for data
New materials and design are introduced into existing products without previous notice. Present systems may differ in some respects from those presented in this catalogue.

Thunder-KMT12 I

ACOUSTICS	
Power handling	700 W ^(AES)
Impedance	8 Ω
Frequency range	40 Hz - 150 Hz ± 3dB (preset relating)
Maximum SPL	128 dB continuous - 134 dB peak
COVERAGE	
Horizontal	Omni°
Vertical	Omni°
CROSSOVER	
Type	DSP controlled
Frequency	150 Hz (preset dependent)
TRANSDUCERS	
Full-range	1 x 12" Neodymium speakers with 3" voice coil
AMPLIFIERS	
Type	1 modules class D - DSP controlled
Power	2x1000 Watt @ 8Ω
Protection	Dynamic limiter, over current, over temp, short circuits
PHYSICAL OVERVIEW	
Dimensions	32.6 x 32.7 x 43.5 cm (12.83" x 12.87" x 17.04") ⁽¹⁾
Weight	15.6 Kg (34.39 lb)

1, (W x H x D)
Notes for data - New materials and design are introduced into existing products without previous notice. Present systems may differ in some respects from those presented in this catalogue.





Designed and Made in Italy

K-ARRAY surl
Via Paolina Romagnoli 17 | 50038 Scarperia e San Piero - Firenze - Italy
ph +39 055 84 87 222 | info@k-array.com

www.k-array.com